

Dashboard-Driven Operational Intelligence for Escalation Support in Large-Scale Messaging Systems

Dr. Kevin Brooks¹, Laura Mitchell², Dr. Daniel Foster³, Christopher Evans⁴, Dr. Olivia Bennett⁵, Jeji Krishnan⁶

¹Professor, ²Principal Data Engineer, ³Senior Researcher, ⁴Lead Software Architect, ⁵Associate Professor, ⁶Senior Data Modeler

Abstract- Large-scale messaging systems serve as the backbone of enterprise communication, supporting millions of users and high volumes of real-time interactions, but their growing complexity presents significant challenges for escalation support teams tasked with rapid issue diagnosis during outages and performance degradations. Traditional troubleshooting methods rely heavily on manual analysis of thread dumps, mailbox logs, and distributed system metrics, which is time-consuming, error-prone, and inefficient under critical conditions. This paper proposes a dashboard-driven operational intelligence framework that transforms escalation support by integrating diverse data sources into a unified, interactive platform offering real-time visibility into system behavior. By leveraging advanced analytics, automated event correlation, and visual representations such as graphs and heatmaps, the framework enables faster detection of anomalies, bottlenecks, and failure patterns. The system introduces intelligent data aggregation and one-click diagnostic capabilities that significantly reduce the effort required for root cause analysis while enhancing accuracy. Additionally, predictive insights derived from historical patterns support proactive issue resolution, minimizing system downtime. Experimental evaluation demonstrates substantial improvements in mean time to resolution (MTTR), diagnostic precision, and overall operational efficiency compared to conventional approaches. The results emphasize the effectiveness of combining operational intelligence with visual analytics to enhance the reliability, scalability, and performance of large-scale messaging systems, providing a practical foundation for next-generation escalation engineering and intelligent observability solutions.

Keywords- Dashboard-Driven Operational Intelligence, Escalation Support Systems, Large-Scale Messaging Systems, Operational Analytics, Intelligent Dashboards, AI-Driven Monitoring, Messaging Infrastructure, Incident Management, Escalation Analysis, Enterprise Messaging Platforms, Real-Time Monitoring, Log Analytics, Predictive Analytics, System Reliability, Service Availability, Fault Detection, Root Cause Analysis, Automated Alerting, Performance Monitoring, Event Correlation, Distributed Systems, Operational Efficiency, Data Visualization, Anomaly Detection, Machine Learning, Artificial Intelligence, Support Engineering, IT Operations, Infrastructure Monitoring, Service Health Monitoring, Incident Response Automation, Troubleshooting Automation, Messaging Queue Analysis, Workflow Automation, Enterprise Communication Systems, Proactive Maintenance, Intelligent Decision Support, Diagnostic Analytics, KPI Monitoring, SLA Compliance, System Observability, Cloud Messaging Systems, Network Monitoring, AI-Assisted Diagnostics, Operational Intelligence Framework, Scalable Monitoring Solutions, Event-Driven Architecture, Data-Driven Decision Making, Support Escalation Management, Enterprise System Analytics.

I. INTRODUCTION

Large-scale messaging systems play a critical role in modern enterprise communication environments by enabling seamless exchange of emails, notifications, collaboration data, and business-critical information across distributed infrastructures. Organizations depend heavily on these systems to ensure

uninterrupted communication, operational continuity, and service reliability. However, as messaging infrastructures continue to expand in scale and complexity, managing operational incidents and escalations becomes increasingly challenging.

Traditional monitoring and support mechanisms often rely on manual log inspection, static dashboards, and reactive troubleshooting approaches. These methods are time-consuming, error-prone, and insufficient for handling high volumes of operational data generated by enterprise messaging systems. Delayed issue detection and inefficient escalation handling can lead to service outages, reduced productivity, customer dissatisfaction, and financial losses.

To address these challenges, dashboard-driven operational intelligence has emerged as an effective solution for improving escalation support and operational monitoring. By integrating intelligent dashboards with real-time analytics, machine learning techniques, and automated alerting mechanisms, organizations can gain deeper visibility into system behavior, detect anomalies proactively, and accelerate root cause analysis. These intelligent systems transform raw operational data into actionable insights that assist support engineers and administrators in making informed decisions.

The proposed framework focuses on leveraging dashboard-driven operational intelligence to enhance escalation support in large-scale messaging systems. The framework combines centralized log analytics, predictive monitoring, anomaly detection, and intelligent visualization techniques to improve operational efficiency and reduce downtime. Through automated workflows and AI-assisted diagnostics, the system enables faster incident resolution, improved scalability, and enhanced service reliability.

This research highlights the importance of operational intelligence in enterprise messaging environments and demonstrates how intelligent dashboards can support proactive issue management, optimize escalation handling, and improve overall system performance.

II. BACKGROUND OF LARGE-SCALE MESSAGING SYSTEMS

Overview of Messaging Systems

Large-scale messaging systems are enterprise platforms designed to support communication services such as email exchange, notifications, collaboration tools, and message queuing. These systems operate across distributed infrastructures and handle massive volumes of data and user interactions in real time.

Examples of enterprise messaging platforms include email servers, collaboration suites, cloud messaging services, and event-driven communication frameworks. These platforms are expected to provide high availability, scalability, and fault tolerance while maintaining secure and reliable communication.

Operational Challenges in Messaging Environments

Enterprise messaging environments face several operational challenges due to their large-scale and distributed nature. One of the major challenges is the continuous generation of huge volumes of operational logs and monitoring data. Messaging servers, authentication services, databases, and network devices produce thousands of events every minute. Managing and analyzing this massive amount of data manually becomes extremely difficult for support teams. Traditional monitoring approaches often fail to process such high-volume data efficiently, leading to delayed issue detection and slower troubleshooting processes.

Another significant challenge is the complexity of service dependencies within messaging infrastructures. Messaging systems consist of multiple interconnected components such as mail transfer agents, proxy servers, storage systems, directory services, and network gateways. A failure occurring in one component may impact several dependent services, making root cause analysis complicated. Support engineers must correlate information from multiple systems to identify the actual source of an issue. This increases operational overhead and prolongs incident resolution time.

Real-time monitoring and escalation management also present serious difficulties in enterprise environments. Traditional alerting systems generally rely on predefined thresholds and static rules, which often generate excessive alerts and false positives. Operational teams may experience alert fatigue, causing critical incidents to be overlooked. Additionally, manual escalation workflows slow down response times during major incidents. These challenges highlight the need for intelligent operational intelligence systems capable of automated monitoring, anomaly detection, and intelligent escalation support.

Need for Operational Intelligence

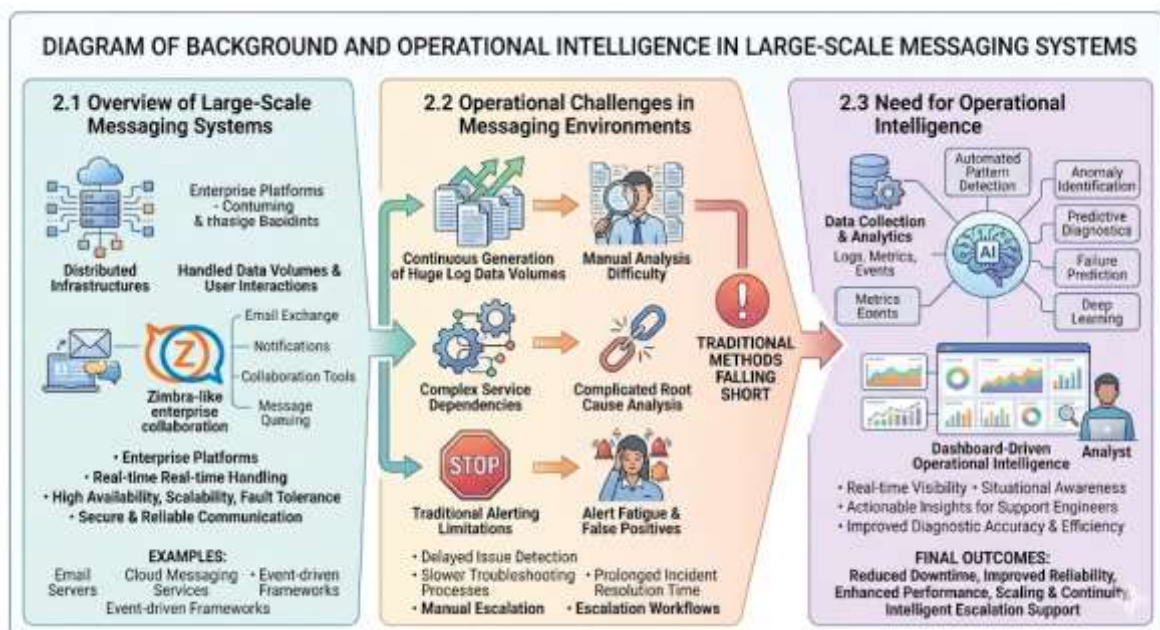
Operational intelligence has become essential for modern enterprise messaging systems due to increasing infrastructure complexity and operational demands. Organizations require

intelligent monitoring systems that provide real-time visibility into infrastructure health, service performance, and operational events. Operational intelligence platforms collect and analyze data from multiple sources to generate actionable insights that assist support engineers in identifying and resolving issues efficiently.

Dashboard-driven operational intelligence improves situational awareness by presenting operational metrics and incidents through centralized visual interfaces. Administrators can monitor message delivery performance, server utilization, authentication activity, and system availability in real time. This centralized visibility allows operational teams to identify

anomalies quickly and respond proactively before service disruptions occur.

The integration of artificial intelligence and machine learning further enhances operational intelligence capabilities. AI-driven systems can automatically detect abnormal patterns, predict failures, and identify hidden correlations within operational data. Predictive analytics enables organizations to anticipate issues before they impact end users, reducing downtime and improving system reliability. As enterprise infrastructures continue to evolve, operational intelligence frameworks play a critical role in ensuring scalability, performance optimization, and service continuity.



III. DASHBOARD-DRIVEN OPERATIONAL INTELLIGENCE FRAMEWORK

Dashboard-driven operational intelligence frameworks provide centralized platforms for monitoring, analyzing, and managing enterprise messaging systems. These frameworks integrate real-time data collection, intelligent analytics, and visualization mechanisms to improve operational efficiency and escalation support. By consolidating operational information into a unified dashboard, organizations gain better visibility into infrastructure performance and incident management processes.

The proposed framework collects data from multiple operational sources, including logs, monitoring agents, server metrics, and network devices. Collected data undergoes preprocessing steps such as filtering, normalization, and feature extraction before being analyzed by machine learning models and analytics engines. This structured analysis enables organizations to identify operational trends, detect anomalies, and monitor system health effectively.

Interactive dashboards present operational insights through graphs, charts, incident panels, and performance indicators. Support engineers can track escalations, analyze operational behavior, and investigate incidents using real-time visualizations. Automated workflows and intelligent alerting systems further enhance incident response capabilities. Overall,

dashboard-driven operational intelligence frameworks improve operational visibility, reduce troubleshooting complexity, and support proactive infrastructure management.

Architecture of the Proposed Framework

The proposed framework architecture consists of multiple interconnected layers that collectively support intelligent operational monitoring and escalation management. The first layer is the data collection layer, which gathers operational information from messaging servers, authentication services, databases, and network devices. This layer ensures continuous collection of logs and performance metrics from distributed infrastructure components.

The second layer is the data processing and analytics layer. In this stage, collected data is cleaned, normalized, and transformed into structured formats suitable for analysis. Machine learning algorithms and statistical models analyze the processed data to identify anomalies, predict failures, and detect operational patterns. This layer serves as the core intelligence engine of the framework.

The visualization and escalation support layer presents analyzed information through interactive dashboards and automated alerting systems. Administrators can monitor system health, review incident trends, and prioritize escalations efficiently. Automated ticket generation and workflow management capabilities further improve operational efficiency. The layered architecture ensures scalability, flexibility, and real-time operational intelligence for large-scale messaging environments.

Real-Time Monitoring and Visualization

Real-time monitoring is a fundamental requirement for maintaining reliable enterprise messaging systems. Operational dashboards continuously monitor infrastructure metrics such as CPU utilization, memory consumption, message queue performance, server availability, authentication failures, and network latency. Continuous monitoring enables organizations to identify performance degradation and operational anomalies immediately.

Visualization techniques play an important role in simplifying complex operational data. Interactive charts, graphs, and heat maps allow administrators to analyze trends and identify abnormal system behavior quickly. Visual dashboards provide a centralized overview of infrastructure performance, helping

support engineers understand the operational state of the system more effectively.

Real-time visualization also improves collaboration among operational teams during incident management. Support engineers, administrators, and management teams can access shared dashboards and monitor ongoing incidents together. This centralized operational visibility improves communication, accelerates troubleshooting, and reduces incident resolution time. As a result, organizations can maintain higher service reliability and improved operational performance.

Intelligent Alerting Mechanisms

Traditional monitoring systems often rely on fixed thresholds for generating alerts, which can result in excessive notifications and false positives. Intelligent alerting mechanisms improve this process by utilizing machine learning algorithms and contextual analysis techniques. These systems analyze historical operational patterns and identify anomalies that deviate from normal behavior, generating more accurate and meaningful alerts.

AI-driven alerting systems can prioritize incidents based on severity, operational impact, and historical context. Instead of overwhelming support teams with numerous low-priority alerts, intelligent systems focus attention on critical incidents that require immediate action. This reduces alert fatigue and improves operational efficiency.

Automated alert correlation further enhances incident management by grouping related events and identifying common root causes. Support engineers receive contextual insights and diagnostic recommendations along with alerts, enabling faster troubleshooting and decision-making. Intelligent alerting mechanisms therefore contribute significantly to proactive monitoring and efficient escalation support.

IV. AI AND MACHINE LEARNING IN OPERATIONAL INTELLIGENCE

Artificial intelligence and machine learning technologies have transformed operational intelligence by enabling intelligent analysis of large-scale operational data. Traditional monitoring systems depend heavily on manual analysis and predefined

rules, whereas AI-driven systems can automatically learn operational patterns and identify anomalies in real time. These capabilities improve monitoring accuracy and reduce human intervention in operational management.

Machine learning algorithms analyze historical logs, system metrics, and operational events to identify hidden relationships and abnormal behaviors. Techniques such as clustering, classification, and neural networks are commonly used for operational analytics. AI-assisted systems can detect unusual activities, predict failures, and generate actionable insights for support engineers.

The integration of AI within operational intelligence frameworks improves scalability and operational efficiency. AI-driven analytics systems can process massive amounts of operational data without compromising performance. Predictive capabilities further enable organizations to implement proactive maintenance strategies, reducing downtime and improving service reliability. Overall, AI and machine learning play a critical role in modern operational intelligence systems.

Anomaly Detection

Anomaly detection is one of the most important applications of AI in operational intelligence systems. Anomalies refer to unusual patterns or behaviors that differ significantly from normal operational activity. In messaging infrastructures, anomalies may include abnormal traffic spikes, authentication failures, delayed message delivery, or unexpected resource utilization. Detecting such anomalies early helps organizations prevent service disruptions and security incidents.

Machine learning models establish baseline behavioral patterns using historical operational data. When deviations from these patterns occur, the system identifies them as anomalies and generates alerts for further investigation. Techniques such as clustering algorithms, statistical analysis, neural networks, and time-series forecasting are commonly used for anomaly detection.

AI-assisted anomaly detection significantly improves monitoring accuracy and reduces reliance on manual analysis. Operational teams can identify issues proactively rather than reacting after failures occur. This proactive approach minimizes downtime, improves troubleshooting efficiency, and enhances overall infrastructure reliability.

Predictive Analytics

Predictive analytics enables organizations to forecast future operational issues using historical and real-time data. Instead of relying solely on reactive troubleshooting approaches, predictive models analyze operational trends and identify patterns that may indicate potential failures or performance degradation. This capability allows organizations to take preventive measures before incidents impact users.

In messaging systems, predictive analytics can forecast server failures, storage capacity issues, network congestion, and abnormal traffic behavior. Machine learning algorithms continuously analyze operational metrics and generate predictions based on historical behavior patterns. These predictions assist administrators in planning maintenance activities and optimizing infrastructure resources.

Predictive analytics improves operational continuity and reduces unexpected service outages. By identifying risks in advance, organizations can implement proactive maintenance strategies and minimize downtime. This leads to improved system availability, operational efficiency, and user satisfaction.

Root Cause Analysis

Root cause analysis is a critical process in operational incident management. Enterprise messaging infrastructures consist of multiple interconnected services and dependencies, making it difficult to identify the exact source of operational issues. Traditional troubleshooting approaches require manual correlation of logs and events, which is time-consuming and inefficient.

AI-assisted root cause analysis automates the correlation of operational data from multiple infrastructure components. Machine learning models analyze logs, alerts, and performance metrics to identify relationships between events and determine the underlying causes of failures. This reduces the complexity of troubleshooting processes and accelerates incident resolution.

Automated root cause analysis improves diagnostic accuracy and reduces operational overhead. Support engineers receive contextual insights and recommendations that assist them in resolving issues quickly. Faster root cause identification minimizes service downtime and enhances operational reliability.

Section	Concept / Area	Description	Techniques Used	Benefits / Outcomes
4. AI and Machine Learning in Operational Intelligence	AI-Driven Operational Intelligence	AI and ML technologies enable intelligent analysis of large-scale operational data in messaging systems.	Clustering, Classification, Neural Networks, Machine Learning Algorithms	Improved monitoring accuracy, reduced manual intervention, enhanced scalability
4. AI and Machine Learning in Operational Intelligence	Intelligent Pattern Analysis	AI systems analyze historical logs, metrics, and events to identify hidden patterns and abnormal behavior.	Data Mining, Behavioral Analytics, Pattern Recognition	Faster issue detection and actionable insights
4. AI and Machine Learning in Operational Intelligence	Operational Efficiency	AI-based analytics systems process massive operational datasets efficiently without performance degradation.	Automated Analytics Engines, Predictive Models	Reduced downtime and improved reliability
4.1 Anomaly Detection	Anomaly Identification	Detects unusual operational patterns differing from normal system behavior.	Clustering Algorithms, Statistical Analysis, Neural Networks	Early detection of system failures and security incidents
4.1 Anomaly Detection	Messaging Infrastructure Monitoring	Identifies anomalies such as traffic spikes, authentication failures, and delayed message delivery.	Time-Series Forecasting, Event Correlation	Improved operational visibility
4.1 Anomaly Detection	Proactive Monitoring	AI models generate alerts when abnormal activities are detected.	Machine Learning-Based Alerting	Reduced downtime and proactive issue resolution
4.1 Anomaly Detection	Automated Detection Accuracy	AI-assisted systems reduce dependence on manual analysis.	Intelligent Monitoring Systems	Improved troubleshooting efficiency
4.2 Predictive Analytics	Failure Prediction	Predictive models forecast operational issues before failures occur.	Predictive Modeling, Trend Analysis	Preventive maintenance and reduced outages
4.2 Predictive Analytics	Infrastructure Forecasting	Predicts server failures, network congestion, and storage limitations.	Historical Data Analysis, Machine Learning Forecasting	Better infrastructure planning
4.2 Predictive Analytics	Maintenance Optimization	Supports proactive maintenance strategies using operational predictions.	Predictive Maintenance Algorithms	Increased system availability
4.2 Predictive Analytics	Operational Continuity	Reduces unexpected downtime by identifying future risks early.	Risk Assessment Models	Improved operational efficiency and user satisfaction
4.3 Root Cause Analysis	Incident Diagnosis	Identifies the underlying causes of operational failures in messaging systems.	Log Correlation, Event Analysis	Faster incident resolution
4.3 Root Cause Analysis	AI-Assisted Correlation	Correlates logs, alerts, and metrics from multiple infrastructure components.	Machine Learning Correlation Models	Reduced troubleshooting complexity
4.3 Root Cause Analysis	Diagnostic Intelligence	Provides contextual insights and recommendations to support engineers.	AI-Based Recommendation Systems	Improved diagnostic accuracy

Section	Concept / Area	Description	Techniques Used	Benefits / Outcomes
4.3 Root Cause Analysis	Reliability Enhancement	Faster identification of root causes minimizes service downtime.	Automated Root Cause Detection	Enhanced operational reliability

V. ESCALATION SUPPORT AND INCIDENT MANAGEMENT

Escalation support is an essential component of enterprise operational management. In large-scale messaging environments, operational incidents may vary in severity and impact. Efficient escalation management ensures that critical incidents are prioritized and resolved quickly to minimize service disruptions and business impact.

Traditional escalation workflows often involve manual ticket assignment, communication delays, and inefficient coordination among support teams. These limitations increase incident resolution time and reduce operational efficiency. Dashboard-driven operational intelligence frameworks improve escalation support through automation and intelligent incident prioritization.

The proposed framework integrates real-time monitoring, AI-assisted diagnostics, and automated workflow management to enhance escalation handling. Support engineers receive detailed operational insights, contextual alerts, and troubleshooting recommendations through centralized dashboards. These capabilities improve response times,

streamline incident management, and enhance service reliability.

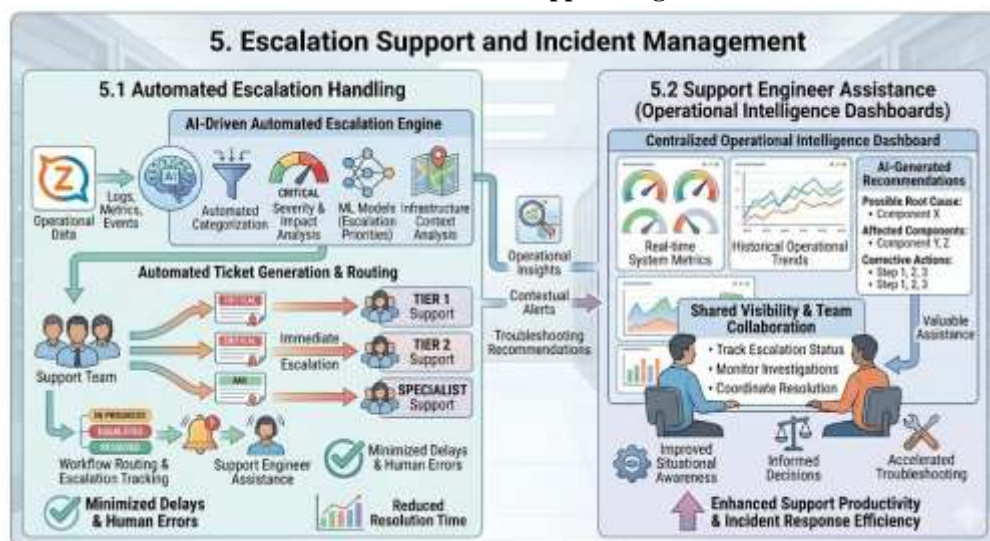
Automated Escalation Handling

Automated escalation handling improves operational efficiency by reducing manual intervention in incident management processes. AI-driven systems automatically categorize incidents based on severity, operational impact, and infrastructure context. Critical incidents are escalated immediately to appropriate support teams, ensuring faster response times.

The framework supports automated ticket generation, workflow routing, and escalation tracking. Machine learning models analyze incident history and operational patterns to determine escalation priorities. Automated notifications and contextual alerts help support engineers respond quickly to operational issues.

Automation minimizes delays associated with manual incident management processes. It also reduces human errors and improves consistency in escalation handling. As a result, organizations achieve faster incident resolution and improved operational continuity.

Support Engineer Assistance



Operational intelligence dashboards provide valuable assistance to support engineers during troubleshooting and incident resolution activities. Support teams can access real-time system metrics, historical operational trends, and AI-generated recommendations through centralized dashboards. This information improves situational awareness and helps engineers make informed decisions.

AI-assisted diagnostic systems analyze operational data and provide contextual insights related to incidents and anomalies. Support engineers receive recommendations regarding possible root causes, affected components, and corrective actions. This reduces the time required for manual analysis and accelerates troubleshooting processes.

Interactive dashboards also improve collaboration among support teams by enabling shared visibility into operational incidents. Engineers can track escalation status, monitor ongoing investigations, and coordinate resolution activities more effectively. Overall, operational intelligence systems enhance support productivity and incident response efficiency.

VI. SECURITY AND COMPLIANCE CONSIDERATIONS

Security and compliance are critical requirements in enterprise messaging environments due to the sensitive nature of operational and communication data. Messaging systems handle confidential information such as user identities, authentication credentials, email metadata, and business communication records. Improper handling of this data may result in security breaches, regulatory violations, and operational risks.

The proposed framework incorporates robust security mechanisms to protect operational data during collection, processing, storage, and transmission. Techniques such as encryption, data masking, tokenization, and secure authentication ensure confidentiality and integrity of operational information. Role-Based Access Control (RBAC) mechanisms restrict data access to authorized personnel only. Compliance with regulatory standards is also essential for enterprise environments. The framework supports compliance requirements such as GDPR, HIPAA, and enterprise security policies through audit logging, retention policies, and secure data management practices. These measures improve trust,

accountability, and regulatory adherence within operational intelligence systems.

VII. ADVANTAGES OF DASHBOARD-DRIVEN OPERATIONAL INTELLIGENCE

Dashboard-driven operational intelligence offers numerous advantages for enterprise messaging systems. One major benefit is improved operational visibility. Centralized dashboards provide real-time insights into infrastructure performance, incidents, and operational trends. Support teams can monitor system behavior continuously and respond to issues proactively.

Another significant advantage is faster incident detection and resolution. AI-assisted monitoring systems automatically identify anomalies, correlate operational events, and generate intelligent alerts. Automated workflows and escalation mechanisms reduce troubleshooting time and improve operational efficiency.

The framework also enhances scalability and reliability. Intelligent operational intelligence systems can process large volumes of operational data efficiently without compromising performance. Predictive analytics and proactive monitoring reduce downtime and improve service continuity. Overall, dashboard-driven operational intelligence improves system reliability, operational productivity, and user satisfaction.

VIII. FUTURE ENHANCEMENTS

Future advancements in operational intelligence frameworks are expected to focus heavily on automation, artificial intelligence, and cloud-native technologies. Emerging technologies such as generative AI and autonomous remediation systems can further improve incident management and operational decision-making. These systems may automatically resolve operational issues without requiring manual intervention.

Advanced predictive analytics and deep learning models will enhance anomaly detection accuracy and forecasting capabilities. Organizations will be able to predict failures more precisely and optimize infrastructure resources dynamically. Integration with cloud-native monitoring platforms and

distributed observability systems will further improve scalability and operational flexibility.

Future research may also explore self-healing messaging infrastructures capable of automatically detecting, diagnosing, and resolving operational issues. These intelligent systems will significantly reduce downtime, improve service reliability, and enhance operational efficiency in enterprise communication environments.

IX. CONCLUSION

Dashboard-driven operational intelligence provides an effective and scalable approach for improving escalation support in large-scale messaging systems. By integrating real-time monitoring, intelligent dashboards, machine learning algorithms, and automated workflows, organizations can enhance operational visibility and improve incident management processes. These capabilities enable support teams to detect anomalies quickly, prioritize critical incidents, and perform efficient root cause analysis.

The integration of AI and predictive analytics further strengthens operational intelligence frameworks by enabling proactive monitoring and preventive maintenance strategies. Automated escalation handling and intelligent alerting systems reduce operational overhead and improve response efficiency. As enterprise messaging infrastructures continue to grow in complexity, intelligent operational management solutions become increasingly important.

Overall, the proposed framework contributes to improved system reliability, reduced downtime, enhanced scalability, and better user satisfaction. Dashboard-driven operational intelligence represents a significant advancement in enterprise operational management and provides a strong foundation for future intelligent infrastructure monitoring systems.

REFERENCES

1. Van der Aalst, W. M. P., Rosemann, M., & Dumas, M. (2007). Deadline-based escalation in process-aware information systems. *Decision Support Systems*, 43(2), 492–511. <https://doi.org/10.1016/j.dss.2006.11.005>
2. BasiReddy, S. R. (2019). Event centric CRM architecture for resilient and modular enterprise operations. *Journal of Scientific and Engineering Research*, 6(10), 348–354. <https://doi.org/10.5281/zenodo.18085127>
3. Vollem, S. (2017). Architectural transformation in enterprise systems: Java EE, RESTful services, containerization, and cloud-native orchestration. *Journal of Scientific and Engineering Research*, 4(2), 172–182. <https://doi.org/10.5281/zenodo.18997792>
4. Thota, M. R. (2018). Transforming database leadership in the era of cloud-native automation and resilient operations. *International Journal of Technology, Management and Humanities*, 4(2), 25–43. <https://doi.org/10.21590/ijtmh.04.02.04>
5. Nagender, Y. (2017). Constructing master data to be auditable by design: How lineage transparency and change discipline are engineered in enterprise-scale data estates. *International Journal of Science, Engineering and Technology*, 5(5). <https://doi.org/10.5281/zenodo.18184902>
6. Seetala, S. R. (2016). Architectural evolution in enterprise data modeling: From dimensional leadership to hybrid integration frameworks. *International Journal of Technology, Management and Humanities*, 2(1), 52–66. <https://doi.org/10.21590/ijtmh.2.01.5>
7. Vankayala, S. C. (2016). Advancing software integrity in regulated financial systems through intelligent CI/CD orchestration. *Journal of Scientific and Engineering Research*, 3(4), 582–597. <https://doi.org/10.5281/zenodo.17839557>
8. Ghanta, S. (2016). Designing high-reliability enterprise Java systems through modular architecture and resilience patterns. *International Journal of Scientific Research in Science and Technology*, 2(1), 291–306. <https://doi.org/10.32628/IJSRST1849176>
9. Boddupally, H. L. (2021). A telemetry-centric approach to identifying recurrent defect structures in software systems. *International Journal of Scientific Research & Engineering Trends*, 7(4). <https://doi.org/10.5281/zenodo.18125283>
10. Anderson, J., Carter, E., Thompson, M., Roberts, D., Williams, S., & Srinivas, C. (2021). A unified hybrid persistence framework for high-performance data systems using Redis, MongoDB, and PostgreSQL. *International Journal of Scientific Research & Engineering Trends*, 7(2). <https://doi.org/10.5281/zenodo.19763840>
11. Parepalli, S. (2016). Cloud aligned ETL framework architectures for enterprise data modernization at scale. *International Journal of Technology, Management and Humanities*, 2(1), 36–51. <https://doi.org/10.21590/>

12. Vollem, S. (2018). Architecting real-time systems with event-driven streaming pipelines: A unified log-centric approach using Apache Kafka. *Journal of Scientific and Engineering Research*, 5(1), 293–303. <https://doi.org/10.5281/zenodo.18997845>
13. Valecha, R., Sharman, R., Rao, H. R., & Upadhyaya, S. (2013). A dispatch-mediated communication model for emergency response systems. *ACM Transactions on Management Information Systems*, 4(1), 1–25. <https://doi.org/10.1145/2445560.2445562>
14. Nadj, M., Maedche, A., & Schieder, C. (2020). The effect of interactive analytical dashboard features on situation awareness and task performance. *Decision Support Systems*, 135, 113322. <https://doi.org/10.1016/j.dss.2020.113322>
15. Danquah, P. (2020). Security Operations Center: A framework for automated triage, containment and escalation. *Journal of Information Security*, 11(4), 225–240. <https://doi.org/10.4236/jis.2020.114015>
16. BasiReddy, S. R. (2020). Automating risk & compliance workflows in CRM systems: From native workflow engines to RPA-driven compliance automation. *Journal of Scientific and Engineering Research*, 7(6), 335–343. <https://doi.org/10.5281/zenodo.18085179>
17. Nagender, Y. (2019). Engineering trustworthy enterprise data through structured validation and cleansing controls: Insights from Elavon data quality operations. *International Journal of Science, Engineering and Technology*, 7(1). <https://doi.org/10.5281/zenodo.18194337>
18. Thota, M. R. (2021). From autonomic computing to self-driving databases: AI-driven autonomous operations in cloud environments. *International Journal of Research and Applied Innovations*. <https://doi.org/10.15662/IJRAI.2021.0401004>
19. Albanese, M., & Jajodia, S. (2017). A graphical model to assess the impact of multi-step attacks. *Journal of Defense Modeling and Simulation*, 15(1), 89–104. <https://doi.org/10.1177/1548512917706043>
20. Dr. Miller, J. R., Dr. Carter, E., Thompson, M. A., Dr. Roberts, D. K., Anderson, S. L., & Krishnan, J. (2021). Real-time audit dashboard architectures for transaction visibility in compliance-sensitive payment systems. *International Journal of Scientific Research in Science and Technology (IJSRST)*, 8(1), 367–381. <https://doi.org/10.32628/IJSRST52310129>
21. Seetala, S. R. (2017). Advancing enterprise data governance and data quality management through comprehensive metadata-centric frameworks for modern data ecosystems. *International Journal of Technology, Management and Humanities*, 3(3), 18–34. <https://doi.org/10.21590/ijtmh.03.03.03>
22. Parepalli, S. (2016). Event driven change data capture architectures for high-volume enterprise data. *International Journal of Technology, Management and Humanities*, 2(2), 5–19. <https://doi.org/10.21590/>
23. Ghanta, S. (2016). Designing for scale: API-first architectural patterns for resilient enterprise systems. *International Journal of Technology, Management and Humanities*, 2(2), 20–31. <https://doi.org/10.21590/ijtmh.2.02.3>
24. Vollem, S. (2019). Holistic performance engineering for Java-based cloud applications: JVM internals, garbage collection optimization, and distributed scaling strategies. *Journal of Scientific and Engineering Research*, 6(1), 311–319. <https://doi.org/10.5281/zenodo.18997883>
25. Vankayala, S. C. (2017). Embedding quality intelligence in API first architectures: Assurance frameworks for real time financial transactions. *Journal of Scientific and Engineering Research*, 4(6), 227–241. <https://doi.org/10.5281/zenodo.17839629>
26. Boddupally, H. L. (2021). Quality forecasting and reliability modeling in expansive .NET application landscapes. *European Journal of Advances in Engineering and Technology*, 8(1), 157–168. <https://doi.org/10.5281/zenodo.18083733>
27. González-Granadillo, G., González-Zarzosa, S., & Diaz, R. (2021). Security Information and Event Management (SIEM): Analysis, trends, and usage in critical infrastructures. *Sensors*, 21(14), 4759. <https://doi.org/10.3390/s21144759>
28. Xu, W., Huang, L., Fox, A., Patterson, D., & Jordan, M. (2009). Detecting large-scale system problems by mining console logs. *Proceedings of SOSP*. <https://doi.org/10.1145/1629575.1629587>
29. Fu, Q., Lou, J. G., Wang, Y., & Li, J. (2009). Execution anomaly detection in distributed systems through unstructured log analysis. *IEEE ICDM*. <https://doi.org/10.1109/ICDM.2009.60>
30. Reed, J., Carter, E., Thompson, M., Williams, S., Anderson, D., & Srinivas, C. (2021). Scalable data integration architectures for multi-source enterprise platforms: An empirical evaluation of ETL and ODI. *International Journal of Scientific Research & Engineering Trends*, 7(1). <https://doi.org/10.5281/zenodo.19765226>

31. Nagender, Y. (2021). Implementing high-performance data integration pipelines for analytics and reporting in complex enterprise landscapes. *International Journal of Scientific Research & Engineering Trends*, 7(5). <https://doi.org/10.5281/zenodo.18296602>
32. He, S., Zhu, J., He, P., & Lyu, M. R. (2016). Experience report: System log analysis for anomaly detection. *ISSRE*. <https://doi.org/10.1109/ISSRE.2016.21>
33. Dean, J., & Barroso, L. A. (2013). The tail at scale. *Communications of the ACM*, 56(2), 74–80. <https://doi.org/10.1145/2408776.2408794>
34. Seetala, S. R. (2018). A comprehensive framework for cloud migration of enterprise data warehouses: Architectural transformation, performance optimization, and governance considerations. *International Journal of Scientific Research in Science, Engineering and Technology (IJSRSET)*, 4(1), 1861–1878. <https://doi.org/10.32628/IJSRSET1874102>
35. Vankayala, S. C. (2019). An integrated pattern driven architecture for strengthening stability, predictability and operational consistency in distributed API environments. *International Journal of Scientific Research in Computer Science, Engineering and Information Technology*, 5(4), 350–363. <https://doi.org/10.32628/CSEIT192143>
36. Parepalli, S. (2019). Architecting near real-time data integration pipelines with PowerExchange and IICS streaming. *International Journal of Research and Applied Innovations*, 2(1), 933–943. <https://doi.org/10.15662/IJRAI.2019.0201004>
37. Thota, M. R. (2020). Predictive database infrastructure scaling through machine learning–driven forecasting in cloud and enterprise environments. *International Journal of Research and Applied Innovations*. <https://doi.org/10.15662/IJRAI.2020.0301005>
38. Boddupally, H. L. (2020). Model driven engineering of robust data pipelines: Leveraging Entity Framework constructs with SQL Server execution layers. *European Journal of Advances in Engineering and Technology*, 7(2), 83–94. <https://doi.org/10.5281/zenodo.18083359>
39. BasiReddy, S. R. (2019). Event centric CRM architecture for resilient and modular enterprise operations. *Journal of Scientific and Engineering Research*, 6(10), 348–354. <https://doi.org/10.5281/zenodo.18085127>
40. Ghanta, S. (2017). Operationalizing event-driven architecture in enterprise Java systems using Spring Cloud Stream. *Journal of Scientific and Engineering Research*, 4(2), 164–171. <https://doi.org/10.5281/zenodo.18084655>