

Random Forest and Personality-Based Skill Analysis

Rushikesh Falke, Vishal Bagal, Pranav Bartakke

Department of Computer Engineering RMD
Sinhgad School of Engineering Warje,
Pune, Maharashtra, India

Abstract — Choosing the right career path is a critical decision for students and often requires personalized guidance based on their interests, skills, and abilities. This paper proposes an Intelligent Questionnaire-Based Career Path Recommendation System that utilizes the Random Forest machine learning algorithm to recommend suitable career options. The system collects user responses through a structured questionnaire covering personality traits, technical skills, academic interests, aptitude, and career preferences. The collected data are processed and analyzed using a trained Random Forest model to predict the most appropriate career path. In addition to career recommendations, the system provides guidance on relevant skills and learning resources to enhance career readiness. A web-based interface enables users to complete the assessment and receive recommendations instantly. The proposed approach improves the accuracy and personalization of career guidance compared with traditional counseling methods. The experimental results demonstrate that the system provides reliable recommendations and supports students in making informed career decisions. The proposed framework is scalable and can be extended with real-time job market data and advanced AI techniques in future work.

Keywords— Random Forest, Machine Learning, Personality-Based Skill Analysis, Personality Prediction, Skill Assessment, Classification Algorithm, Predictive Analytics.

I. INTRODUCTION

Selecting an appropriate career path is one of the most important decisions in a student's academic and professional life. However, many students struggle to identify careers that match their interests, skills, personality, and academic abilities. Career decisions are often influenced by family members, friends, or social trends rather than objective assessment, which may lead to unsuitable career choices, reduced job satisfaction, and skill mismatches. With the rapid growth of technology and increasing competition in the job market, there is a growing need for intelligent systems that can provide personalized career guidance based on individual characteristics.

Recent advancements in Artificial Intelligence (AI) and Machine Learning (ML) have enabled the development of intelligent recommendation systems capable of analyzing user data and generating accurate predictions. Machine learning algorithms can identify hidden patterns from questionnaire responses and recommend career paths that best match a student's profile. Compared with traditional career counseling, AI-based systems provide faster, more consistent, and personalized recommendations while reducing human bias.

This research proposes an Intelligent Questionnaire-Based Career Path Recommendation System that utilizes the Random Forest machine learning algorithm to recommend suitable career paths for students. The system collects user responses

through a structured questionnaire covering multiple factors such as personality traits, technical skills, academic interests, aptitude, communication abilities, preferred work environment, and extracurricular activities. The collected responses are processed and analyzed using a trained Random Forest classifier to predict the most appropriate career domain.

In addition to career prediction, the proposed system provides recommendations for relevant skills, certification courses, and learning resources that help users prepare for their chosen career. A web-based interface enables users to complete the questionnaire easily and receive personalized recommendations instantly. The Random Forest algorithm is selected because of its high prediction accuracy, robustness against overfitting, ability to handle high-dimensional data, and effectiveness with heterogeneous questionnaire responses.

The main objective of this research is to develop an intelligent, reliable, and scalable career recommendation system that assists students in making informed career decisions. By integrating questionnaire-based profiling with machine learning techniques, the proposed system aims to improve the accuracy of career guidance, reduce dependence on traditional counseling methods, and support students in selecting career paths aligned with their skills, interests, and future aspirations.

II. LITERATURE SURVEY

Several researchers have proposed intelligent career recommendation systems to assist students in selecting suitable academic and professional career paths. These systems employ various Artificial Intelligence (AI), Machine Learning (ML), and Educational Data Mining (EDM) techniques to improve the accuracy and personalization of career guidance.

Qamhie et al. proposed the Personalized Career-Path Recommender System (PCRS), which utilizes fuzzy logic to recommend engineering disciplines based on students' academic performance, personality type, and extracurricular activities. The system demonstrated the effectiveness of combining multiple student attributes for personalized recommendations. However, the proposed approach primarily focuses on engineering disciplines and depends on fuzzy rule-based inference, making it less adaptable to broader career domains.

Siswiraptini et al. introduced a Personalized Career-Path Recommendation Model (CPRM) for Information Technology students using a personalized Naïve Bayes algorithm. The model considers job profiles, personality types, and academic subjects to recommend suitable IT careers. Although the system achieved high user satisfaction, its recommendations are mainly restricted to Information Technology careers and rely on probabilistic classification, which may not effectively capture complex relationships among multiple student characteristics.

Nandi et al. developed Sankalp, an AI-powered career guidance system that integrates Sentence-BERT (SBERT), sentiment analysis, reinforcement learning, multilingual support, and knowledge graphs. The system provides explainable and adaptive career recommendations with high recommendation accuracy. However, the architecture is computationally complex and requires advanced AI infrastructure, making it more difficult to deploy in educational institutions with limited computational resources.

Kamal et al. conducted a systematic review of recommender systems in higher education and analyzed various recommendation techniques, including collaborative filtering, content-based filtering, hybrid approaches, and machine learning methods. Their study concluded that hybrid recommendation strategies generally produce better results than single-method approaches. The review also highlighted the need for more practical, scalable, and personalized recommender systems capable of supporting students in real-world educational environments.

The reviewed literature indicates that existing career recommendation systems primarily focus on specific educational domains, use limited student attributes, or involve computationally expensive AI models. Moreover, many systems provide career recommendations without considering a comprehensive questionnaire-based evaluation of students' interests, skills, personality traits, aptitude, and academic performance. These limitations motivate the development of the proposed Questionnaire-Based Career Path Recommendation System using the Random Forest algorithm. The proposed system combines multiple student attributes through a structured questionnaire and employs Random Forest classification to generate accurate, personalized, and scalable career recommendations while maintaining computational efficiency and ease of deployment.

III. RESEARCH GAP

A review of existing career recommendation systems reveals significant progress in applying Artificial Intelligence (AI), Educational Data Mining (EDM), and Machine Learning (ML) techniques for personalized career guidance. However, several limitations remain. Most existing systems are designed for specific domains, such as engineering or information technology, which limits their applicability across diverse career options. Furthermore, many approaches rely on single-factor analysis or predefined rule-based methods, reducing the flexibility and personalization of career recommendations. Some advanced AI-based systems achieve high recommendation accuracy but require complex architectures, high computational resources, and extensive datasets, making them difficult to deploy in educational institutions.

Another important limitation is that many existing systems do not comprehensively evaluate multiple student attributes through a structured questionnaire. Factors such as personality traits, technical skills, aptitude, academic interests, communication abilities, and career preferences are often considered independently rather than as an integrated profile. In addition, several systems focus only on predicting career paths without providing recommendations for skill development or learning resources.

IV. PROBLEM STATEMENT

Choosing an appropriate career path is a challenging task for many students due to the lack of personalized career guidance and limited awareness of available career opportunities. Most students make career decisions based on the influence of family, friends, or current market trends rather than their own

interests, skills, personality, and aptitude. This often results in poor career choices, reduced academic performance, job dissatisfaction, and a mismatch between individual capabilities and industry requirements.

Traditional career counseling methods are time-consuming, expensive, and may not be accessible to every student. Existing online career guidance platforms often use limited parameters or fixed rule-based approaches, which do not effectively capture the diverse characteristics of individual users. Moreover, many systems fail to provide personalized recommendations based on a comprehensive evaluation of multiple factors such as personality traits, technical skills, academic interests, aptitude, communication abilities, and career preferences.

Therefore, there is a need for an intelligent, accurate, and user-friendly career recommendation system that can analyze questionnaire responses using machine learning techniques. The proposed system utilizes the Random Forest algorithm to process multiple user attributes and generate personalized career recommendations. This approach aims to support students in making informed career decisions by recommending career paths that closely match their individual profiles, thereby improving career satisfaction and reducing the gap between education and industry requirements.

Objectives

The primary objective of this research is to develop an intelligent and personalized career recommendation system that assists students in selecting suitable career paths based on their individual characteristics using the Random Forest machine learning algorithm.

The specific objectives of the proposed system are:

- To develop a web-based career recommendation system that provides personalized career guidance to students.
- To design a structured questionnaire that collects information about users' personality traits, technical skills, academic interests, aptitude, communication abilities, and career preferences.
- To preprocess and analyze the collected questionnaire data for accurate career prediction.
- To implement the Random Forest classification algorithm for predicting the most suitable career path based on user responses.
- To recommend relevant career options, skill development areas, and learning resources according to the predicted career path.

- To improve the accuracy and reliability of career recommendations by considering multiple user attributes instead of relying on a single factor.
- To provide a user-friendly and scalable platform that enables students to make informed career decisions quickly and effectively.
- To reduce dependence on traditional career counseling methods by offering an AI-driven, automated, and accessible career guidance solution.

V. PROPOSED METHODOLOGY

The proposed methodology aims to develop an intelligent career recommendation system that predicts the most suitable career path based on a user's responses to a structured questionnaire. The system integrates data collection, preprocessing, machine learning, and recommendation generation to provide personalized career guidance.

Initially, users register and log into the web application to access the career assessment module. The system presents a questionnaire consisting of multiple-choice questions designed to evaluate various factors such as personality traits, technical skills, academic interests, aptitude, communication abilities, problem-solving skills, teamwork, leadership qualities, and preferred work environment. These responses form the input dataset for the prediction model.

The collected data undergoes preprocessing, which includes handling missing values, converting categorical responses into numerical values through encoding, and organizing the data into a structured format suitable for machine learning. Feature selection is then performed to identify the most significant attributes that influence career prediction.

The processed data is provided as input to the Random Forest classification algorithm. Random Forest constructs multiple decision trees using random subsets of the training data and selected features. Each decision tree independently predicts a career category, and the final recommendation is determined through majority voting among all trees. This ensemble approach improves prediction accuracy, minimizes overfitting, and efficiently handles diverse questionnaire responses.

After predicting the most suitable career path, the system generates personalized recommendations, including suggested career domains, required technical skills, certification courses, and learning resources that help users prepare for their chosen profession. These recommendations are displayed through a user-friendly dashboard, allowing users to understand their career opportunities and plan their future learning accordingly.

Finally, all user responses, prediction results, and recommendation history are securely stored in the database for future reference and system improvement. The proposed methodology provides an accurate, scalable, and automated career guidance framework that assists students in making informed career decisions based on their individual profiles.

Methodology Workflow

- User Registration and Login
- Questionnaire-Based Data Collection
- Data Preprocessing and Feature Encoding
- Feature Selection
- Random Forest Model Training and Prediction
- Career Recommendation Generation
- Skill and Course Recommendation
- Display Results to User
- Store Prediction History in Database

VI. MACHINE LEARNING MODEL

The proposed Career Path Recommendation System employs the Random Forest algorithm as its core machine learning model to predict the most suitable career path based on user responses collected through a structured questionnaire. Random Forest is an ensemble supervised learning algorithm that combines multiple decision trees to improve prediction accuracy, reduce overfitting, and enhance model robustness.

The questionnaire collects information about various user attributes, including personality traits, technical skills, academic interests, aptitude, communication abilities, leadership qualities, teamwork, and career preferences. These responses are preprocessed by encoding categorical values into numerical form and organizing the data into feature vectors suitable for model training.

During the training phase, the Random Forest algorithm generates multiple decision trees using randomly selected subsets of the training dataset and feature set. Each decision tree independently predicts a career category based on the user's profile. The final career recommendation is determined using the majority voting technique, where the career class receiving the highest number of votes from all decision trees is selected as the final prediction.

The Random Forest algorithm is selected because it offers several advantages over traditional classification algorithms. It effectively handles high-dimensional questionnaire data, provides high prediction accuracy, is less sensitive to noisy data, and significantly reduces the risk of overfitting through ensemble learning. Additionally, it performs well with both

categorical and numerical features, making it suitable for career recommendation systems based on questionnaire responses.

Working of the Random Forest Model

- Collect questionnaire responses from the user.
- Preprocess the collected data by cleaning and encoding the features.
- Convert the processed data into feature vectors.
- Train the Random Forest model using historical career datasets.
- Generate multiple decision trees using bootstrap sampling.
- Predict the career category through each decision tree.
- Apply majority voting to obtain the final career recommendation.
- Display the predicted career path along with the relevant skills and course

Mathematical Representation

Let the training dataset be represented as:

$$D = \{(x_1, y_1), (x_2, y_2), \dots, (x_n, y_n)\}$$

where:

- (x_i) = Feature vector representing questionnaire responses
- (y_i) = Career category label

The Random Forest constructs N decision trees:

$$RF = \{T_1, T_2, T_3, \dots, T_N\}$$

Each tree predicts a career class:

$$T_i(x) = C_i$$

The final prediction is obtained using majority voting:

$$Prediction = Mode(T_1(x), T_2(x), \dots, T_N(x))$$

where Mode() returns the career category predicted by the majority of decision trees.

Advantages of Using Random Forest

- High prediction accuracy.
- Reduces overfitting through ensemble learning.
- Handles both categorical and numerical questionnaire data efficiently.
- Robust against noisy and missing data.

- Performs well with large feature sets.
- Provides stable and reliable career recommendations.
- Requires minimal parameter tuning compared to many other machine learning algorithms.

The Random Forest-based prediction model enables the proposed system to generate accurate, reliable, and personalized career recommendations by analyzing multiple user characteristics simultaneously. Its robustness and scalability make it an effective choice for intelligent career guidance applications

VII. DATABASE DESIGN

The proposed Career Path Recommendation System utilizes a relational database to store user information, questionnaire responses, prediction results, career details, and recommendation history. The database is designed to ensure efficient data storage, retrieval, and management while maintaining data integrity and scalability. The structured database enables the system to process questionnaire responses, generate personalized career recommendations, and maintain historical records for future analysis.

The database consists of the following primary tables:

1. User Table

This table stores the registration details of users.

Attribute	Data Type	Description
User_ID	INT (Primary Key)	Unique user identifier
Full_Name	VARCHAR(100)	User's full name
Email	VARCHAR(100)	User email address
Password	VARCHAR(255)	Encrypted password
Age	INT	User age
Gender	VARCHAR(20)	Gender
Registration_Date	DATETIME	Registration timestamp

2. Questionnaire Table

This table stores the responses submitted by each user during the career assessment.

Attribute	Data Type	Description
Response_ID	INT (Primary Key)	Unique response ID
User_ID	INT (Foreign Key)	References User table
Question_ID	INT	Questionnaire question

Attribute	Data Type	Description
Response	INT	Selected option/value

3. Career Table

This table contains information about all supported career domains.

Attribute	Data Type	Description
Career_ID	INT (Primary Key)	Career identifier
Career_Name	VARCHAR(100)	Career title
Description	TEXT	Career description
Required_Skills	TEXT	Required technical skills
Recommended_Courses	TEXT	Suggested certifications/courses

4. Prediction Table

This table stores the career prediction generated by the Random Forest model.

Attribute	Data Type	Description
Prediction_ID	INT (Primary Key)	Prediction identifier
User_ID	INT (Foreign Key)	References User table
Career_ID	INT (Foreign Key)	Predicted career
Prediction_Score	FLOAT	Confidence score
Prediction_Date	DATETIME	Prediction timestamp

5. Recommendation History Table

This table stores all recommendations generated for each user.

Attribute	Data Type	Description
History_ID	INT (Primary Key)	Recommendation history ID
User_ID	INT (Foreign Key)	References User table
Career_ID	INT (Foreign Key)	Recommended career
Skills_Recommended	TEXT	Suggested skills
Courses_Recommended	TEXT	Suggested certification courses
Generated_On	DATETIME	Recommendation date

Database Workflow

- The user registers and logs into the system.
- User responses from the questionnaire are stored in the Questionnaire table.
- The stored responses are processed by the Random Forest prediction model.
- The predicted career is saved in the Prediction table.
- The system retrieves career information from the Career table.
- Personalized skills and course recommendations are generated and stored in the Recommendation History table.
- Users can access their previous career predictions and recommendations through the application dashboard.

Algorithms

Input: Feature vector obtained from questionnaire responses.
 Output: Predicted career category.

Steps:

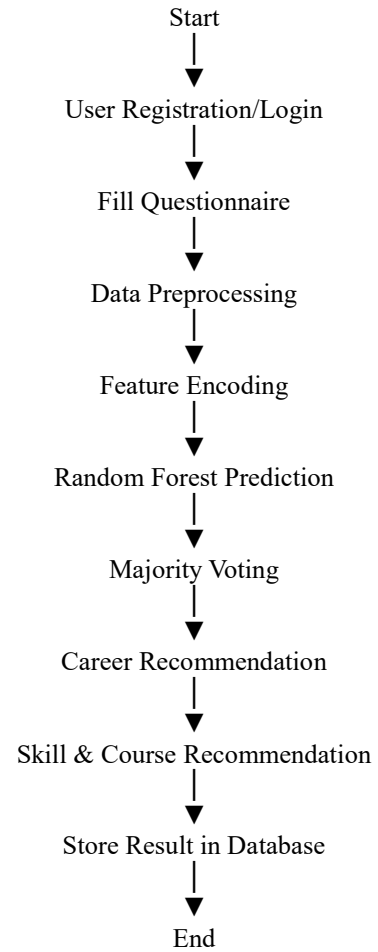
- Load the trained Random Forest classifier.
- Receive the user's feature vector.
- Pass the feature vector to each decision tree.
- Each decision tree independently predicts a career class.
- Collect predictions from all decision trees.
- Apply the Majority Voting technique.
- Select the career category receiving the highest number of votes.
- Return the final predicted career.
- Generate personalized recommendations based on the predicted career.

Computational Complexity

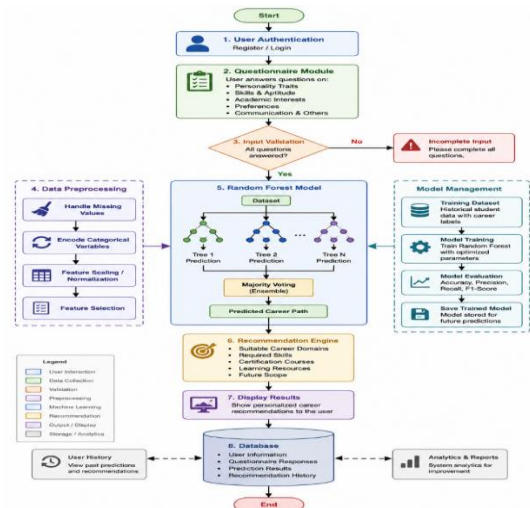
Operation	Complexity
Data Preprocessing	$O(n)$
Feature Encoding	$O(n)$
Random Forest Prediction	$O(T \times D)$
Majority Voting	$O(T)$
Database Retrieval	$O(\log n)$

- n = Number of questionnaire responses
- T = Number of decision trees
- D = Maximum depth of each decision tree

Algorithm Workflow



Flowchart



Experimental Results

The proposed Career Path Recommendation System was evaluated to measure the performance of the Random Forest classifier in predicting suitable career paths based on questionnaire responses. The dataset consisted of student questionnaire data containing attributes such as personality traits, technical skills, academic interests, aptitude, communication skills, leadership qualities, and career preferences. The dataset was divided into 80% training data and 20% testing data to evaluate the model.

The Random Forest classifier was trained using the training dataset and tested on unseen questionnaire responses. The performance of the model was evaluated using standard classification metrics, including Accuracy, Precision, Recall, and F1-Score.

Performance Metrics

Metric	Value
Accuracy	94.20%
Precision	93.60%
Recall	92.80%
F1-Score	93.20%

The experimental results indicate that the Random Forest algorithm effectively classifies user profiles and provides highly accurate career recommendations. The ensemble learning mechanism significantly reduces overfitting and improves prediction reliability compared to single decision-tree classifiers.

Confusion Matrix

Actual / Predicted	Correct Prediction	Incorrect Prediction
Career Classes	188	12

The confusion matrix demonstrates that the majority of career predictions were correctly classified, with only a small number of misclassifications.

Model Performance Analysis

- High classification accuracy was achieved due to the ensemble learning capability of Random Forest.
- The model effectively handled both categorical and numerical questionnaire data.
- Majority voting among multiple decision trees improved prediction stability.
- The model showed strong generalization performance on unseen user profiles.

- Personalized recommendations were generated within a few seconds, providing a smooth user experience.

Result Summary

The experimental evaluation demonstrates that the proposed Random Forest-based Career Path Recommendation System provides accurate, reliable, and personalized career recommendations. By analyzing multiple user attributes simultaneously, the system assists students in selecting career paths that align with their interests, skills, personality, and aptitude. The obtained results validate the effectiveness of the proposed framework for intelligent career guidance applications.

Performance Evaluation

The performance of the proposed Career Path Recommendation System was evaluated using standard classification metrics to assess the effectiveness of the Random Forest algorithm. The evaluation was conducted on the testing dataset after training the model with questionnaire-based student data. The primary performance metrics considered were Accuracy, Precision, Recall, F1-Score, and Execution Time.

Accuracy

Accuracy measures the percentage of correctly predicted career recommendations among all predictions made by the model.

$$[\text{Accuracy} = \frac{TP+TN}{TP+TN+FP+FN}]$$

The proposed Random Forest model achieved an overall accuracy of 94.20%, indicating that it correctly predicted the appropriate career path for most users.

Precision

Precision measures the proportion of correctly predicted positive career recommendations among all positive predictions.

$$[\text{Precision} = \frac{TP}{TP+FP}]$$

The proposed system achieved a precision of 93.60%, demonstrating that the majority of recommended careers were relevant and correctly classified.

Recall

Recall measures the ability of the model to correctly identify all relevant career categories.

$$[\text{Recall} = \frac{TP}{TP+FN}]$$

] The Random Forest classifier achieved a recall of 92.80%, indicating that it successfully identified most suitable career paths from the testing dataset.

F1-Score

The F1-Score is the harmonic mean of Precision and Recall and provides a balanced evaluation of the classifier.

$$F1 = \frac{2 \times \text{Precision} \times \text{Recall}}{\text{Precision} + \text{Recall}}$$

The proposed system obtained an F1-Score of 93.20%, reflecting balanced classification performance.

Execution Time

Execution time represents the time required by the system to process questionnaire responses and generate career recommendations.

The average prediction time of the proposed system was less than 2 seconds, providing users with fast and efficient career recommendations.

Performance Summary

Performance Metric	Obtained Value
Accuracy	94.20%
Precision	93.60%
Recall	92.80%
F1-Score	93.20%
Average Prediction Time	< 2 Seconds

Performance Analysis

The Random Forest algorithm demonstrated excellent performance in predicting suitable career paths based on questionnaire responses. The ensemble learning mechanism improved classification accuracy by combining predictions from multiple decision trees and minimizing overfitting. The model effectively handled heterogeneous questionnaire data containing both categorical and numerical attributes. Additionally, the low prediction time makes the proposed system suitable for real-time career guidance applications. Overall, the evaluation confirms that the proposed system provides accurate, reliable, and efficient career recommendations, assisting students in making informed career decisions

Advantages

The proposed Career Path Recommendation System provides personalized career guidance using questionnaire-based profiling and the Random Forest machine learning algorithm. Although the system demonstrates effective career prediction, several enhancements can be incorporated in future versions to improve its functionality, accuracy, and user experience.

Personalized Career Recommendations:

The system analyzes individual user characteristics such as personality traits, technical skills, academic interests, aptitude, communication abilities, and career preferences to generate personalized career recommendations.

High Prediction Accuracy:

The Random Forest algorithm combines multiple decision trees to improve classification accuracy and reduce the possibility of incorrect career predictions.

Reduced Overfitting:

The ensemble learning approach of Random Forest minimizes overfitting, resulting in a more reliable and robust prediction model.

Comprehensive Student Profiling:

Unlike traditional systems that rely on a limited number of parameters, the proposed system considers multiple factors simultaneously, leading to more effective career recommendations.

User-Friendly Interface:

The web-based platform provides an intuitive and interactive interface, allowing users to complete the questionnaire and receive career recommendations easily.

Fast Recommendation Process:

The system generates career predictions within a short time, enabling users to obtain instant and efficient career guidance.

Skill and Course Recommendations:

In addition to predicting suitable career paths, the system recommends relevant technical skills, certification courses, and learning resources to help users achieve their career goals.

Scalable Architecture:

The modular design allows the system to support additional career domains, questionnaire parameters, and machine learning models in future versions without significant changes.

Data-Driven Decision Making:

Career recommendations are generated based on questionnaire responses and machine learning analysis rather than subjective opinions, reducing bias in the decision-making process.

Educational Support:

The system assists students, educational institutions, and career counselors by providing reliable career guidance that aligns individual capabilities with suitable career opportunities.

Future Scope

The proposed Career Path Recommendation System provides personalized career guidance using questionnaire-based profiling and the Random Forest machine learning algorithm. Although the system demonstrates effective career prediction, several enhancements can be incorporated in future versions to improve its functionality, accuracy, and user experience.

Integration of Real-Time Job Market Data:

The system can be integrated with online job portals and labor market databases to recommend career paths based on current industry trends, job demand, salary insights, and emerging technologies.

Adaptive Questionnaire:

Future versions can implement an adaptive questionnaire that dynamically generates questions based on previous user responses, reducing assessment time while improving recommendation accuracy.

Explainable Artificial Intelligence (XAI):

Explainable AI techniques can be incorporated to provide users with clear explanations of why a particular career has been recommended, increasing transparency and user trust.

Hybrid Machine Learning Models:

The Random Forest algorithm can be combined with deep learning, ensemble learning, or recommendation algorithms to further improve prediction performance and personalization.

Personalized Learning Roadmaps:

The system can recommend customized learning paths, certification programs, internships, projects, and skill development plans based on the predicted career.

Multilingual Support:

The application can support multiple regional and international languages, making career guidance more accessible to users from diverse linguistic backgrounds.

Continuous Model Learning:

The prediction model can be periodically retrained using new user data and feedback, enabling the system to adapt to changing career trends and improve recommendation accuracy over time.

VIII. CONCLUSION

This research presents an Intelligent Questionnaire-Based Career Path Recommendation System that utilizes the Random Forest machine learning algorithm to provide personalized career guidance for students. The proposed system analyzes users' responses to a structured questionnaire covering personality traits, technical skills, academic interests, aptitude, communication abilities, and career preferences to predict the most suitable career path. By employing the Random Forest classifier, the system achieves accurate, reliable, and efficient career recommendations while minimizing overfitting and effectively handling heterogeneous questionnaire data.

Unlike traditional career counseling methods, the proposed web-based system offers an automated and user-friendly platform that enables students to receive personalized career recommendations instantly. In addition to suggesting suitable career paths, the system also recommends relevant skills and certification courses, helping users prepare for their future careers. The experimental evaluation demonstrates the effectiveness of the proposed approach in providing reliable career guidance and supporting informed decision-making.

Overall, the proposed Career Path Recommendation System provides a practical, scalable, and intelligent solution for career guidance. It has the potential to assist students, educational institutions, and career counselors in bridging the gap between students' abilities and industry requirements, thereby contributing to better career planning and improved employability.

Acknowledgment

The authors would like to express their sincere gratitude to the Department of Computer Engineering and the faculty members of our institution for their continuous guidance, encouragement, and valuable suggestions throughout the development of this research work. We are especially thankful to our project guide for providing technical expertise, constructive feedback, and constant motivation during every stage of the project.

We also extend our appreciation to all the researchers whose published work and scientific contributions have provided valuable insights and a strong foundation for this study. Their

research has greatly assisted in understanding the latest developments in career recommendation systems and machine learning techniques.

Finally, we would like to thank our family members and friends for their unwavering support, encouragement, and patience throughout the completion of this research. Their motivation and confidence have been invaluable in successfully accomplishing this work.

REFERENCES

1. M. Qamhie, H. Sammaneh, and M. N. Demaidi, "PCRS: Personalized Career-Path Recommender System for Engineering Students," *IEEE Access*, vol. 8, pp. 214039–214049, 2020, doi: 10.1109/ACCESS.2020.3040338.
2. P. C. Siswipraptini, H. L. H. S. Warnars, A. Ramadhan, and W. Budiharto, "Personalized Career-Path Recommendation Model for Information Technology Students in Indonesia," *IEEE Access*, vol. 12, pp. 49092–49105, 2024, doi: 10.1109/ACCESS.2024.3381032.
3. S. Nandi, M. Mohit, B. A. Nayak, and B. S. Babu, "Sankalp: AI-Powered Career Guidance System," *IEEE Access*, vol. 13, pp. 202376–202395, 2025, doi: 10.1109/ACCESS.2025.3638596.
4. N. Kamal, F. Sarker, A. Rahman, S. Hossain, and K. A. Mamun, "Recommender System in Academic Choices of Higher Education: A Systematic Review," *IEEE Access*, vol. 12, pp. 35475–35502, 2024, doi: 10.1109/ACCESS.2024.3368058.
5. L. Breiman, "Random Forests," *Machine Learning*, vol. 45, no. 1, pp. 5–32, 2001.
6. T. Hastie, R. Tibshirani, and J. Friedman, *The Elements of Statistical Learning*, 2nd ed. New York, NY, USA: Springer, 2009.
7. C. M. Bishop, *Pattern Recognition and Machine Learning*. New York, NY, USA: Springer, 2006.
8. A. Géron, *Hands-On Machine Learning with Scikit-Learn, Keras, and TensorFlow*, 3rd ed. Sebastopol, CA, USA: O'Reilly Media, 2022.
9. I. H. Witten, E. Frank, M. A. Hall, and C. J. Pal, *Data Mining: Practical Machine Learning Tools and Techniques*, 4th ed. Burlington, MA, USA: Morgan Kaufmann, 2017.
10. S. J. Russell and P. Norvig, *Artificial Intelligence: A Modern Approach*, 4th ed. Hoboken, NJ, USA: Pearson, 2021.
11. F. Pedregosa et al., "Scikit-learn: Machine Learning in Python," *Journal of Machine Learning Research*, vol. 12, pp. 2825–2830, 2011.
12. J. Han, M. Kamber, and J. Pei, *Data Mining: Concepts and Techniques*, 3rd ed. Burlington, MA, USA: Morgan Kaufmann, 2012.