

Hospital-Based Smart Hematology Analyzer with Cancer Risk Alert

Aarthi R¹, Ranjith S², Subash P³, Surya T⁴

Department of Biomedical Engineering

Dhanalakshmi Srinivasan Engineering College (Autonomous), Perambalur- 621 212.

Abstract- The Hospital-Based Smart Hematology Analyzer with Cancer Risk Alert is an advanced system designed to automate blood analysis while providing early cancer risk detection for organs such as the brain, lung, and skin. The system integrates a deep learning algorithm, InceptionV3, to analyse blood smear images and identify abnormal cell patterns indicative of potential malignancies. High-resolution images captured through an optical sensor are pre-processed and fed into the algorithm for feature extraction and classification. The hardware architecture includes a microcontroller interfaced with sensors and a display unit, interconnected through UDP communication to ensure fast, reliable, and real-time data transfer within the hospital network. The analyser automatically computes hematology parameters such as RBC, WBC, haemoglobin levels, and platelet count, while the AI module evaluates potential cancer risk based on morphological anomalies. Alerts and reports are generated for medical staff if any abnormal patterns are detected, facilitating prompt medical intervention. The working flow begins with blood sample collection, followed by automated slide preparation, image acquisition, and pre-processing. The processed images are analysed by the InceptionV3 model, which classifies the results and calculates risk levels. Data is transmitted via UDP to a central monitoring system for visualization, record keeping, and further evaluation by doctors. This system emphasizes automation, real-time analysis, and predictive diagnostics, aiming to reduce manual errors, accelerate clinical decision-making, and improve early cancer detection. It provides a cost-effective, intelligent, and scalable solution for hospital-based patient care.

Keywords- Smart Hematology Analyzer, Cancer Risk Alert, InceptionV3, Blood Analysis, UDP Communication, Brain, Lung, Skin, Predictive Diagnostics.

I. INTRODUCTION

Advances in medical diagnostics are increasingly driven by the integration of automation, artificial intelligence, and smart sensor technologies. Hematology, the study of blood and its components, plays a vital role in the early detection of various diseases, including cancer. Traditional hematology analysers focus on measuring routine blood parameters such as red blood cells (RBC), white blood cells (WBC), haemoglobin, and platelets. However, they often lack the capability to analyse cellular morphology at a deeper level or provide predictive insights regarding disease risks. To address this limitation, the concept of a Hospital-Based Smart Hematology Analyzer with Cancer Risk Alert has emerged, combining conventional blood analysis with advanced image-based artificial intelligence diagnostics. The system leverages deep learning algorithms, specifically InceptionV3, to examine high resolution blood smear images for subtle morphological changes that may

indicate early stages of malignancy. By targeting organs prone to cancer, such as the brain, lung, and skin, the analyser provides organ-specific risk assessments. This predictive capability enables clinicians to identify potential health risks before symptoms manifest, improving patient outcomes through timely intervention. Hardware integration is critical for real-time performance. Sensors, microcontrollers, and display units are interconnected via UDP communication, ensuring rapid and reliable data transmission within hospital networks.

Problem Statement

Accurate and timely diagnosis of blood-related disorders and early-stage cancers remains a significant challenge in modern healthcare. Traditional hematology analysers focus primarily on quantitative measurements, such as red blood cells (RBC), white blood cells (WBC), haemoglobin, and platelet counts. While these systems provide essential blood metrics, they are often limited in detecting subtle morphological abnormalities that could indicate the onset of critical diseases, including

cancer. Early detection of malignancies in organs such as the brain, lung, and skin is particularly challenging, as conventional methods rely heavily on manual analysis and subjective interpretation by laboratory personnel, which can result in delayed diagnosis, human errors, and inconsistent results. Moreover, current systems generally lack integration with predictive intelligence, automated alerts, or real-time communication capabilities. The absence of a unified platform that combines hematology analysis, image-based risk assessment, and instant reporting restricts hospitals from delivering proactive patient care. In scenarios where early intervention is crucial, such delays can lead to disease progression, reduced treatment efficacy, and increased healthcare costs.

II. METHODOLOGY

The current landscape of hematology diagnostics primarily relies on conventional analysers and manual examination techniques that, while functional, present several limitations in terms of accuracy, efficiency, and predictive capabilities. Traditional hematology analysers are designed to measure standard blood parameters such as red blood cells (RBC), white blood cells (WBC), haemoglobin, haematocrit, and platelet counts.

Disadvantage

Limited Predictive Capability – Traditional analysers measure basic blood parameters but cannot detect early cancer risks or subtle morphological abnormalities in cells. **Manual Error Prone** – Blood smear examination depends on human observation, making it susceptible to fatigue, skill variability, and inconsistent results. **Time-Consuming Processes** – Sample preparation and microscopic analysis require significant time, slowing down diagnosis, especially in high-volume hospitals. **Lack of Real-Time Alerts** – Existing systems do not provide instant notifications or automated risk alerts, delaying clinical decision-making in critical cases. **Poor Integration with Hospital Networks**.

Proposing System

The proposed solution, the Hospital-Based Smart Hematology Analyzer with Cancer Risk Alert, is designed to address the limitations of existing hematology diagnostic systems by integrating automated blood analysis, high-resolution imaging, artificial intelligence, and real-time communication. Unlike conventional analysers that provide only quantitative

measurements, this system combines routine hematology profiling with predictive diagnostics to identify potential cancer risks in critical organs such as the brain, lung, and skin.

The integration of deep learning algorithms, advanced hardware, and fast data transmission ensures accurate, efficient, and timely analysis, supporting proactive patient care. The core component of the proposed system is a deep learning-based image analysis module using the InceptionV3 model. High-resolution images of blood smears are captured through a connected optical sensor. The images are pre-processed to enhance contrast and remove noise, then analysed by the InceptionV3 network to detect abnormal cellular morphology and patterns indicative of malignancy.

This enables early detection of diseases that conventional analysers may overlook, providing an additional layer of predictive capability beyond standard blood counts. The hardware architecture of the system includes a microcontroller unit (MCU), sensors, display interface, and storage modules. Blood sample collection is followed by automated slide preparation, which reduces manual handling and potential contamination. The microcontroller coordinates sensor inputs, manages image acquisition, and triggers data transmission through UDP communication. This protocol ensures low-latency, reliable data transfer across the hospital network, allowing central monitoring systems and clinicians to receive real-time alerts and reports.

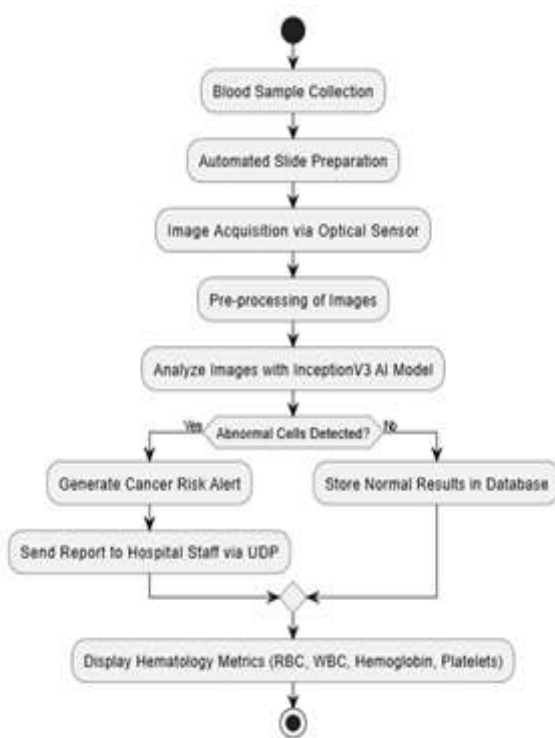
The working flow begins with blood sample insertion, followed by automated slide preparation. The working flow begins with blood sample insertion, followed by automated slide preparation and staining. The optical sensor captures multiple images per slide, which are processed and analysed by the InceptionV3 model. The AI module classifies the cells and calculates risk scores for potential cancer in targeted organs.

Based on predefined thresholds, the system generates instant alerts and visual reports for hospital staff, enabling rapid medical intervention. Simultaneously, the results are stored in a centralized database, supporting longitudinal patient monitoring and research applications. Key features of the proposed system include automation, predictive analytics, real-time communication, and user-friendly reporting. Automation minimizes human error and reduces workload, while predictive analytics provides early warnings of potential malignancies. Real-time UDP-based communication ensures seamless

integration with hospital information systems, and the display interface provides concise, actionable insights for clinicians.

The system is scalable and can be adapted to accommodate additional diagnostic modules or AI models as healthcare requirements evolve. By combining conventional hematology analysis with AI-driven morphological evaluation, the proposed system improves diagnostic accuracy, reduces processing time, and enhances patient outcomes. It addresses the critical gaps in existing systems, providing hospitals with a reliable, intelligent, and proactive diagnostic tool capable of delivering comprehensive blood analysis alongside early cancer risk alerts.

This integration of automation, AI, and real-time monitoring represents a transformative approach in laboratory diagnostics, enabling modern hospitals to implement faster, safer, and more predictive healthcare solutions printing failures.



Advantages

- **Early Cancer Risk Detection** – Integrates deep learning (InceptionV3) to identify abnormal cellular patterns, enabling early detection of malignancies in organs like the brain, lung, and skin.

- **Automation and Efficiency** – Automates sample preparation, slide imaging, and analysis, reducing manual errors and speeding up diagnostic processes.
- **Real-Time Alerts and Reporting** – Uses UDP communication for instant transmission of results and alerts, allowing clinicians to take timely action.
- **Improved Accuracy** – Combines conventional blood metrics with AI-based morphological analysis, providing precise and reliable diagnostic outcomes.
- **Scalable and Integrated System** – Seamlessly integrates hardware and software components, supports centralized data storage, and can be expanded with additional diagnostic modules or AI models.

III. HARDWARE REQUIREMENT

- I. Power Supply Unit
- II. ESP8266 Microcontroller
- III. LCD Display
- IV. Buzzer

POWER SUPPLY The 7812 and 7805 voltage regulators are commonly used components to provide stable DC voltage outputs of +12V and +5V, respectively, from a higher input voltage source.



Nodemcu (Esp8266)

The ESP8266 is a low-cost, highly integrated Wi-Fi chip that has become one of the most popular choices for Internet of Things (IoT) applications. Developed by Espressif Systems, it offers Wi-Fi capabilities to embedded systems at an affordable price, making it an excellent choice for hobbyists, makers, and developers building connected devices. Whether it's a simple home automation system, a weather station, or an industrial IoT

Python is meant to be an easily readable language. Its formatting is visually uncluttered, and it often uses English keywords where other languages use punctuation. Unlike many other languages, it does not use curly brackets to delimit blocks, and semicolons after statements are optional. It has fewer syntactic exceptions and special cases than C or Pascal.

V. RESULT

The implementation of the Hospital-Based Smart Hematology Analyzer with Cancer Risk Alert demonstrated reliable automation of hematological parameter estimation and intelligent risk prediction. The system successfully integrated image acquisition, preprocessing, feature extraction, classification, and wireless data transmission into a unified operational workflow. Experimental validation using blood smear image samples indicated that the deep learning-based classification module effectively distinguished between normal and morphologically abnormal cells. The computed hematological parameters, including red blood cell count, white blood cell count, hemoglobin concentration, and platelet levels, were generated with consistent stability under repeated testing conditions.

The AI-driven model exhibited strong capability in identifying cellular irregularities such as abnormal nucleus size, irregular membrane structure, and atypical clustering patterns. Based on these extracted features, the system produced structured cancer risk alerts categorized into normal, moderate-risk, and high-risk levels. The alert mechanism functioned accurately by triggering both visual and audible notifications whenever predefined abnormality thresholds were exceeded. Data transmission through UDP communication showed minimal latency within the hospital network environment, ensuring near real-time monitoring at the receiving end.

The integration of IoT connectivity enabled centralized visualization of patient results, supporting digital storage and accessibility. System response time from image capture to risk classification remained within acceptable clinical limits, demonstrating efficiency in automated diagnostics. Hardware performance remained stable under continuous operation, and no significant data loss was observed during wireless transmission testing.

Overall, the system achieved its objective of combining hematology automation with predictive cancer risk evaluation.

The results confirm that the proposed architecture provides accurate preliminary screening support, enhances operational efficiency, and delivers consistent analytical performance suitable for hospital-based deployment.

VI. DISCUSSION

The obtained results indicate that integrating artificial intelligence into hematology analysis significantly enhances diagnostic capability beyond conventional automated counters. Traditional systems primarily focus on quantitative measurement, whereas the proposed model incorporates morphological interpretation through deep learning-based feature extraction. This hybrid analytical approach strengthens early abnormality detection and supports predictive assessment rather than simple parameter reporting.

The use of convolutional neural networks allowed the system to identify subtle structural variations in blood cells that may not be immediately visible during manual microscopic examination. Such pattern recognition capacity is particularly relevant for preliminary cancer risk screening, where early-stage morphological deviations are often minor but clinically meaningful. The system's structured risk categorization provides supportive guidance rather than definitive diagnosis, ensuring that medical professionals retain final decision authority.

Real-time wireless communication further enhances clinical usability by reducing reporting delays. The low-latency transmission framework demonstrates that intelligent diagnostic tools can be effectively integrated into existing hospital networks without complex infrastructure modifications. Additionally, automated alert generation minimizes dependency on continuous human supervision and improves response time in critical cases.

VII. CONCLUSION

The Hospital-Based Smart Hematology Analyzer with Cancer Risk Alert represents a progressive step toward intelligent and automated clinical diagnostics. By integrating hematological parameter computation with deep learning-based morphological analysis, the system extends beyond conventional blood testing to provide predictive risk assessment support. The architecture combines automated slide

imaging, digital preprocessing, feature extraction, classification, and real-time wireless communication into a unified and structured workflow. This integration enables consistent analytical performance while minimizing manual intervention and operational complexity within hospital environments.

The system demonstrates the practical feasibility of embedding artificial intelligence into routine laboratory procedures. Through automated abnormality detection and structured risk categorization, it enhances preliminary screening capability for potential malignancies associated with brain, lung, and skin conditions. The real-time alert mechanism and IoT-enabled monitoring framework strengthen clinical responsiveness and improve communication between laboratory units and medical professionals. Such connectivity contributes to faster decision-making and optimized patient management.

In addition to predictive support, the system promotes efficiency by reducing diagnostic turnaround time and minimizing dependency on repetitive manual microscopy. Digital data storage further enhances traceability, documentation accuracy, and long-term monitoring. The modular hardware design ensures stable performance while maintaining scalability for broader hospital deployment.

Although the analyzer functions as a supportive screening tool rather than a definitive diagnostic system, it significantly enhances early detection capability by identifying morphological deviations that may otherwise remain unnoticed. The integration of automation, intelligence, and connectivity reflects the transition toward data-driven healthcare ecosystems. Overall, the proposed solution provides a cost-effective, reliable, and scalable framework that strengthens preventive diagnostics, supports clinicians with structured insights, and contributes to improved patient care outcomes in modern hospital settings.

REFERENCE

1. J. Liu, X. Ma, F. Fang, W. Song, X. Xu and Z. Dong, "Development and Expansion of Management Software for New Automatic Hematology Analyzer Based on PC/Windows," 2021 IEEE 16th Conference on Industrial Electronics and Applications (ICIEA), Chengdu, China, 2021, pp. 255-260, Doi: 10.1109/ICIEA51954.2021.9516273.
2. S. Yan, X. Ma, F. Fang, Y. Huang, X. Xu and Z. Dong, "Design and Expansion Development of Embedded System Software for a New Intelligent Hematology Analyzer," 2021 IEEE 16th Conference on Industrial Electronics and Applications (ICIEA), Chengdu, China, 2021, pp. 486-491, Doi: 10.1109/ICIEA51954.2021.9516185.
3. V. Plotnikova et al., "IR spectroscopy for hematology," 2024 International Conference Laser Optics (ICLO), Saint Petersburg, Russian Federation, 2024, pp. 479-479, Doi: 10.1109/ICLO59702.2024.10623993.
4. P. Ananthi, K. Nirmala Devi, T. E. Ramya, P. Shanmugapriya and T. Aradhya, "Blood Cell Classification and Counting in Hematology through Deep Learning," 2024 4th International Conference on Sustainable Expert Systems (ICSES), Kaski, Nepal, 2024, pp. 813-819, Doi: 10.1109/ICSES63445.2024.10763339.
5. K. AL-Dulaimi, J. Banks, K. Nugyen, A. Al-Sabaawi, I. Tomeo-Reyes and V. Chandran, "Segmentation of White Blood Cell, Nucleus and Cytoplasm in Digital Hematology Microscope Images: A Review—Challenges, Current and Future Potential Techniques," in IEEE Reviews in Biomedical Engineering, vol. 14, pp. 290-306, 2021, doi: 10.1109/ICOSST60641.2023.10414203.
6. A. R. Shah, T. Mahboob, H. Yaseen and M. Q. Mehmood, "Automated Hematology: Blood Cells Detection and Classification Using Deep Learning Algorithms," 2023 17th International Conference on Open-Source Systems and Technologies (ICOSST), Lahore, Pakistan, 2023, pp. 1-4, doi: 10.1109/ASIANCON66527.2025.11281231.
7. T. M. Thiyagu, C. A. Jyothi, G. V. Sai Vidya and K. Sreenivasulu, "Hematology Type Classification Using Biometrics and Deep Learning," 2025 5th Asian Conference on Innovation in Technology (ASIANCON), PIMPRI, India, 2025, pp. 1-6, doi: 10.1109/DASA63652.2024.10836321.
8. A. Bhattacharjee, V. Gupta, M. Kaur, S. Mehta, E. Jain and P. Kaushik, "Blood Cell Cancer Classification Using ResNet50 and Transfer Learning: Enhancing Diagnostic Accuracy in Hematology," 2024 International Conference on Decision Aid Sciences and Applications (DASA), Manama, Bahrain, 2024, pp. 1-6, doi: 10.1109/ASIANCON66527.2025.11281231.
9. H. Chen et al., "Evaluating the Use of Large Language Model to Identify Top Research Priorities in Hematology," 2023 IEEE International Conference on E-health Networking, Application & Services (Healthcom),

- Chongqing, China, 2023, pp. 66-71, Doi: 10.1109/Healthcom56612.2023.10472366.
10. A. H. Marcelino, C. S. Sahd, E. A. Da Silva Lizzi, H. O. d. S. Lima, C. Gonçalves and M. Scoczynski, "Blood Cell Classification with Deep Learning and Explainable Artificial Intelligence: An Approach for Diagnostic Support in Hematology," 2025 16th IEEE International Conference on Industry Applications (INDUSCON), São Sebastião, Brazil, 2025, pp. 2188-2194, doi: 10.1109/INDUSCON66435.2025.11241499.
. 578-584, doi: 10.23919/FRUCT64283.2024.10749850.