

Predictive Failure Analysis and Reliability Engineering in Cloud-Native Architectures

Jennifer Roberts¹, Rebecca Turner², Victoria Hughes³, Richard Morgan⁴, Chaitanya Srinivas⁵,
Akhilesh Achari⁶

¹Associate Professor of Cloud-Native Technologies, ²Associate Professor of Reliability Engineering,

³Assistant Professor of Software Engineering and Fault Tolerance, ⁴Senior Researcher in Distributed Computing and Reliability,

⁵Senior Java Software Developer, ⁶Java Developer

Abstract- Cloud-native architectures have become the foundation of modern digital applications due to their scalability, flexibility, resilience, and ability to support continuous deployment across distributed computing environments. However, the increasing complexity of microservices, containers, orchestration platforms, and dynamic workloads introduces significant challenges in maintaining system reliability and preventing service disruptions. Traditional reactive maintenance approaches often fail to identify potential failures before they impact application performance and user experience. This research presents a predictive failure analysis framework for reliability engineering in cloud-native architectures that leverages predictive analytics, machine learning algorithms, real-time monitoring, and intelligent fault detection mechanisms to proactively identify and mitigate system failures. The proposed approach continuously analyzes operational metrics, infrastructure logs, service dependencies, and workload patterns to detect anomalies, forecast potential failures, and recommend corrective actions before critical incidents occur. By integrating predictive models with cloud-native reliability engineering practices, the framework supports automated fault diagnosis, resource optimization, resilience enhancement, and service continuity. The study explores key architectural components, predictive techniques, reliability metrics, and implementation strategies for building highly available and fault-tolerant cloud-native systems. Experimental evaluation demonstrates improvements in failure prediction accuracy, system uptime, response performance, and operational efficiency compared to conventional monitoring methods. The findings indicate that predictive failure analysis provides a robust foundation for developing intelligent, adaptive, and resilient cloud-native infrastructures capable of supporting the growing demands of modern enterprise applications and distributed computing ecosystems.

Keywords— Predictive Failure Analysis, Reliability Engineering, Cloud-Native Architectures, Cloud Computing, Cloud-Native Systems, Predictive Analytics, Machine Learning, Artificial Intelligence, Failure Prediction, Fault Detection, Fault Diagnosis, Anomaly Detection, Reliability Modeling, System Reliability, Infrastructure Reliability, Service Reliability, Site Reliability Engineering (SRE), Distributed Systems, Microservices Architecture, Containerization, Kubernetes, Container Orchestration, DevOps, DevSecOps, AIOps, Cloud Infrastructure Management, Operational Analytics, Intelligent Monitoring, Real-Time Monitoring, Observability, Telemetry Analytics, Log Analysis, Event Correlation, Root Cause Analysis, Predictive Maintenance, Failure Forecasting, Resilience Engineering, Cloud Resilience, Infrastructure Optimization, Resource Management, Capacity Planning, Workload Prediction, Performance Engineering, Performance Monitoring, Service-Level Objectives (SLOs), Service-Level Indicators (SLIs), Service-Level Agreements (SLAs), Incident Management, Risk Assessment, Reliability Analytics, Dynamic Scaling, Auto-Scaling, Edge Computing, Hybrid Cloud, Multi-Cloud Environments, Intelligent Automation, Digital Transformation, Data-Driven Reliability, System Health Monitoring, Runtime Analytics, Continuous Reliability Assessment, Reliability Optimization, Cloud Security Monitoring, Infrastructure Observability, Predictive Intelligence, Enterprise Cloud Applications, Distributed Cloud Platforms, Operational Excellence, Software Reliability, Network Reliability, Reliability Metrics, Failure Prevention, Intelligent Fault Management, Next-Generation Cloud Systems.

I. INTRODUCTION

Cloud-native architectures have emerged as a dominant paradigm for developing and deploying modern applications due to their scalability, flexibility, resilience, and support for continuous delivery. Organizations increasingly rely on cloud-native technologies such as microservices, containers, orchestration platforms, and distributed computing infrastructures to meet growing business and operational demands. While these technologies offer numerous advantages, they also introduce significant complexity in managing system reliability, performance, and service availability. The dynamic nature of cloud environments, combined with rapidly changing workloads and distributed dependencies, increases the likelihood of system failures that can negatively impact business operations and user experiences.

Traditional reliability engineering approaches primarily focus on reactive monitoring and fault recovery mechanisms. However, reactive methods often identify issues only after failures have occurred, resulting in service disruptions, financial losses, and reduced customer satisfaction. To address these challenges, predictive failure analysis has emerged as a proactive strategy that leverages data analytics, machine learning, and artificial intelligence techniques to forecast

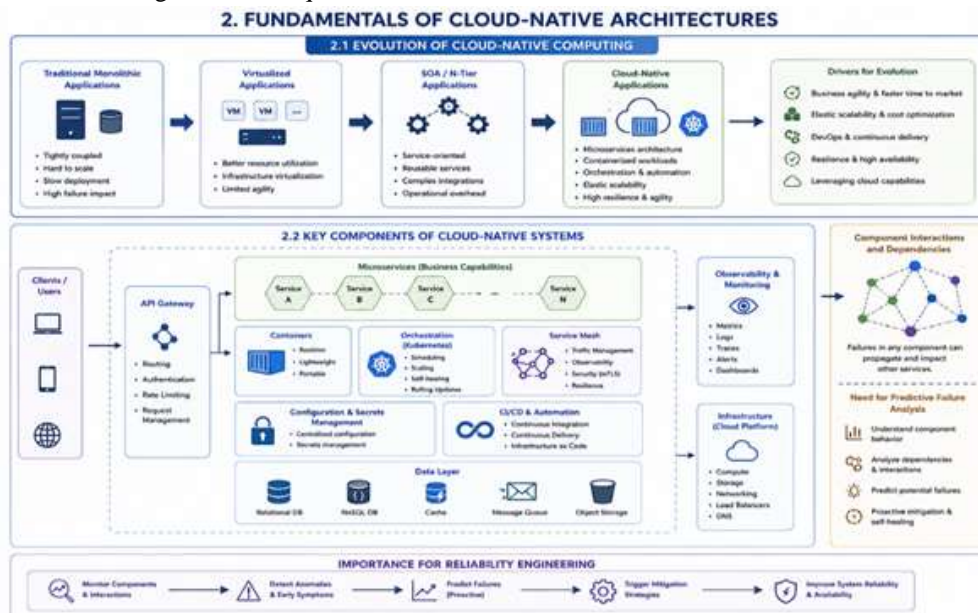
potential failures before they occur. By continuously analyzing operational metrics, logs, traces, and infrastructure data, predictive systems can identify patterns that indicate impending failures and enable preventive actions.

This research investigates Predictive Failure Analysis and Reliability Engineering in Cloud-Native Architectures, focusing on the integration of predictive analytics with reliability engineering principles to enhance system resilience, availability, and operational efficiency.

II. FUNDAMENTALS OF CLOUD-NATIVE ARCHITECTURES

Evolution of Cloud-Native Computing

Cloud-native computing represents the evolution of software development and deployment practices designed specifically for cloud environments. Unlike traditional monolithic systems, cloud-native applications are built using loosely coupled microservices that can be independently deployed, scaled, and managed. This architectural approach enables organizations to accelerate innovation while improving operational agility and scalability.



The adoption of containers, orchestration platforms, and infrastructure automation has significantly enhanced the ability of organizations to deploy and manage large-scale distributed systems. However, the increased number of interconnected

services and infrastructure components also creates new challenges related to reliability and failure management.

Key Components of Cloud-Native Systems

Cloud-native systems typically consist of microservices, containers, service meshes, APIs, orchestration frameworks, and distributed databases. These components collaborate to provide highly available and scalable services. Each component contributes to overall system functionality, but failures within any component can propagate across the architecture and affect service reliability.

Understanding component interactions and dependencies is essential for implementing effective predictive failure analysis strategies. Reliability engineering must consider both individual component behavior and system-wide interactions when designing fault management mechanisms.

III. RELIABILITY ENGINEERING IN CLOUD-NATIVE ENVIRONMENTS

Principles of Reliability Engineering

Reliability engineering focuses on ensuring that systems operate correctly and consistently under specified conditions for a defined period. In cloud-native environments, reliability engineering involves monitoring system health, identifying vulnerabilities, minimizing failures, and maintaining service continuity.

Reliability objectives are often measured through metrics such as availability, mean time between failures (MTBF), mean time to recovery (MTTR), error rates, and service-level objectives. These metrics provide valuable insights into system performance and reliability.

Challenges in Reliability Management

Cloud-native architectures introduce several reliability challenges due to distributed processing, network dependencies, dynamic scaling, and service orchestration. Failures may originate from hardware issues, software defects, resource exhaustion, configuration errors, or external service disruptions.

Traditional monitoring tools often struggle to identify complex failure patterns across distributed systems. As a result, organizations require intelligent reliability solutions capable of

predicting and preventing failures before they impact production environments.

IV. PREDICTIVE FAILURE ANALYSIS FRAMEWORK

Concept of Predictive Failure Analysis

Predictive failure analysis refers to the process of forecasting potential system failures using historical and real-time operational data. Unlike reactive monitoring approaches, predictive systems identify early warning signals and estimate the probability of future failures.

The objective is to enable proactive intervention by system administrators or automated management systems. Early detection of abnormal conditions reduces downtime and improves service reliability.

Data Collection and Observability

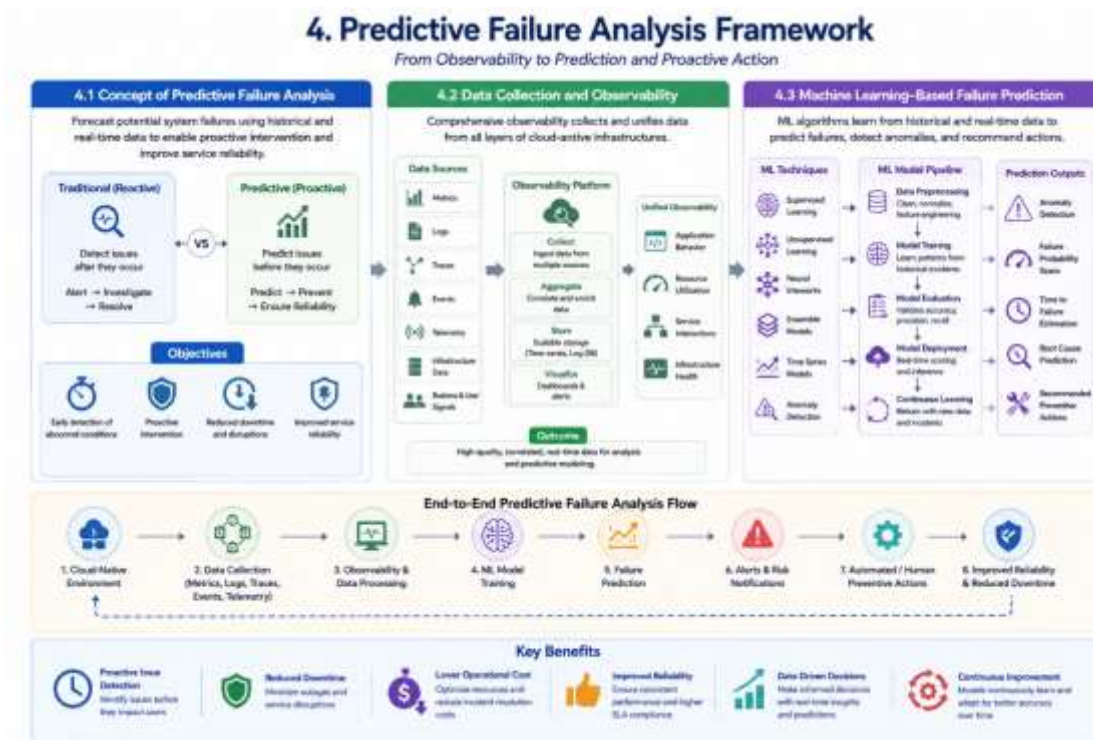
Effective predictive failure analysis depends on comprehensive observability across cloud-native infrastructures. Observability platforms collect metrics, logs, traces, events, and telemetry data from various system components.

These data sources provide detailed information about application behavior, resource utilization, service interactions, and infrastructure health. Advanced analytics platforms aggregate and process this information to generate actionable insights.

Machine Learning-Based Failure Prediction

Machine learning algorithms play a central role in predictive failure analysis. Techniques such as supervised learning, unsupervised learning, neural networks, and ensemble models analyze operational data to identify patterns associated with failures.

Predictive models continuously learn from historical incidents and operational behavior to improve forecasting accuracy. These models can detect anomalies, estimate failure probabilities, and recommend preventive actions.



V. ANOMALY DETECTION AND FAULT DIAGNOSIS

Intelligent Anomaly Detection

Anomaly detection systems identify deviations from normal operational behavior. In cloud-native environments, anomalies may indicate resource bottlenecks, performance degradation, security incidents, or infrastructure failures.

Machine learning-based anomaly detection algorithms analyze multidimensional data streams to identify unusual patterns that traditional threshold-based monitoring systems might overlook.

Root Cause Analysis

Root cause analysis involves identifying the underlying factors responsible for system failures. Cloud-native architectures often involve complex service dependencies, making fault diagnosis challenging.

Predictive analytics platforms utilize dependency graphs, correlation analysis, and causal inference techniques to determine failure origins and accelerate troubleshooting processes.

VI. AUTOMATED RELIABILITY ENHANCEMENT

Self-Healing Mechanisms

Self-healing systems automatically detect failures and initiate corrective actions without human intervention. Common recovery actions include restarting failed services, reallocating resources, rerouting traffic, and deploying replacement instances.

Self-healing capabilities significantly reduce recovery times and improve overall system resilience.

Intelligent Resource Optimization

Predictive analytics enables dynamic resource allocation based on anticipated workloads and system conditions. By forecasting demand patterns, cloud-native platforms can proactively adjust computing resources to prevent performance bottlenecks and service disruptions.

Intelligent resource management improves efficiency while reducing operational costs.

VII. RELIABILITY METRICS AND PERFORMANCE EVALUATION

Reliability Measurement Indicators

Reliability engineering frameworks rely on quantitative metrics to evaluate system performance. Common indicators include uptime, availability, latency, throughput, MTBF, MTTR, and error rates.

These metrics help organizations assess the effectiveness of predictive failure analysis solutions and identify areas for improvement.

Performance Assessment

Performance evaluation involves comparing predictive reliability frameworks with traditional monitoring approaches. Key assessment criteria include prediction accuracy, detection speed, recovery effectiveness, operational efficiency, and infrastructure utilization.

Experimental results often demonstrate significant improvements in reliability and service availability when predictive analytics is integrated into cloud-native operations.

VIII. EMERGING TRENDS AND FUTURE DIRECTIONS

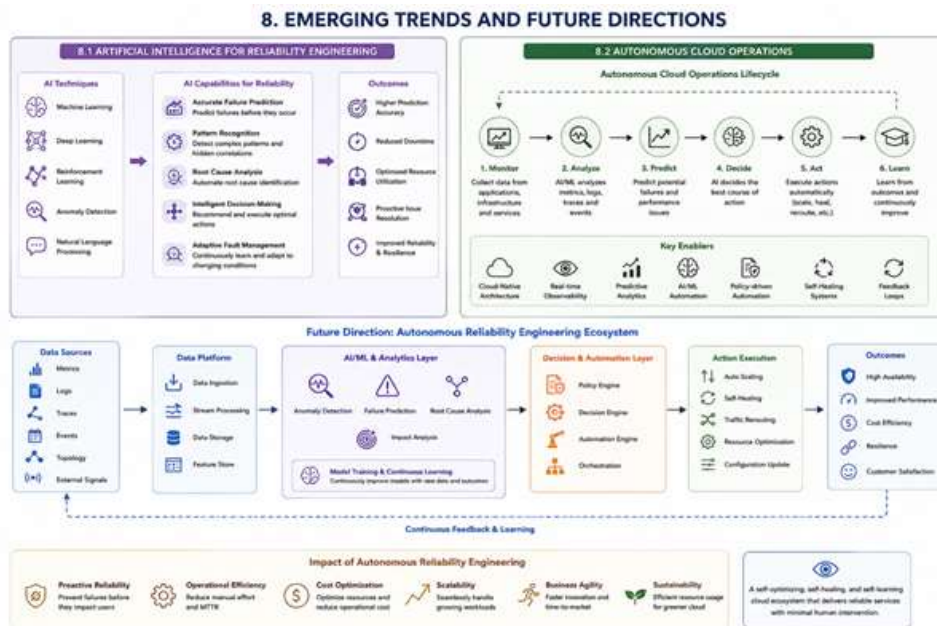
Artificial Intelligence for Reliability Engineering

Artificial intelligence continues to advance predictive reliability capabilities by enabling more accurate forecasting, automated decision-making, and adaptive fault management. Future systems will increasingly leverage deep learning and reinforcement learning techniques for autonomous reliability optimization.

Autonomous Cloud Operations

The convergence of predictive analytics, AI, and cloud-native technologies is driving the development of autonomous cloud operations. These systems will continuously monitor, analyze, predict, and respond to operational conditions with minimal human involvement.

Autonomous reliability engineering has the potential to significantly improve service quality, operational efficiency, and infrastructure resilience.



IX. CONCLUSION

Predictive failure analysis represents a transformative approach to reliability engineering in cloud-native architectures. By leveraging predictive analytics, machine learning, intelligent monitoring, and automated recovery mechanisms,

organizations can proactively identify and mitigate failures before they impact critical services. The integration of predictive technologies with cloud-native reliability practices enhances system resilience, reduces downtime, improves operational efficiency, and supports continuous service

availability. As cloud-native ecosystems continue to evolve, predictive reliability engineering will play an increasingly important role in enabling intelligent, adaptive, and self-managing digital infrastructures capable of meeting the demands of modern enterprise applications.

Furthermore, the adoption of predictive failure analysis enables organizations to transition from reactive maintenance strategies to proactive and preventive reliability management. By continuously analyzing large volumes of operational data generated from cloud-native infrastructures, predictive models can uncover hidden patterns and early indicators of system degradation that may not be visible through conventional monitoring techniques. This capability allows engineering teams to address potential issues before they escalate into critical failures, thereby reducing incident frequency, minimizing service interruptions, and improving overall customer satisfaction. The combination of predictive intelligence and automated response mechanisms also supports faster decision-making and enhances the effectiveness of site reliability engineering practices in highly dynamic cloud environments.

Looking toward the future, advancements in artificial intelligence, deep learning, edge computing, and autonomous cloud operations are expected to further strengthen predictive reliability engineering frameworks. Emerging technologies such as digital twins, self-healing infrastructures, intelligent observability platforms, and AI-driven orchestration systems will enable more accurate failure forecasting and fully automated reliability management. As organizations continue to expand their cloud-native ecosystems across hybrid and multi-cloud environments, the integration of predictive analytics with reliability engineering will become increasingly critical for maintaining operational excellence. Ultimately, predictive failure analysis will serve as a cornerstone technology for building resilient, adaptive, and intelligent cloud-native architectures capable of supporting next-generation digital transformation initiatives and mission-critical enterprise applications.

REFERENCES

1. Di Francesco, P., Lago, P., & Malavolta, I. (2019). Architecting with microservices: A systematic mapping study. *Journal of Systems and Software*, 150, 77–97. <https://doi.org/10.1016/j.jss.2019.01.001>
2. BasiReddy, S. R. (2024). Architecting trustworthy and scalable CRM intelligence with LLM-driven integration and zero trust governance. *Journal of Artificial Intelligence, Machine Learning & Data Science*, 3(2), 2988–2993. <https://doi.org/10.51219/JAIMLD/santhosh-reddybasireddy/620>
3. Vankayala, S. C. (2024). Continuous compliance automation in financial quality engineering: Policy-as-code, CI/CD enforcement, and ISCM-aligned regulatory assurance. *Journal of Scientific and Engineering Research*, 11(1), 330–338. <https://doi.org/10.5281/zenodo.18085319>
4. Menda, J. R. (2024). Transforming Java and Node banking applications through generative AI-centric code engineering. *Journal of Scientific and Engineering Research*, 11(4), 394–408. <https://doi.org/10.5281/zenodo.18085354>
5. Nagender, Y. (2023). Architecting intelligence into master data platforms: An evidence mapping approach to AI-enabled dashboards for compliance and quality monitoring. *International Journal of Scientific Research & Engineering Trends*, 9(6). <https://doi.org/10.5281/zenodo.18770933>
6. Nanchari, N. (2024). Challenges in IoT device interoperability in healthcare. *Journal of Artificial Intelligence, Machine Learning and Data Science*, 2(1), 2727–2728. <https://doi.org/10.51219/JAIMLD/nithin-nanchari/575>
7. Seetala, S. R. (2024). Architecting trustworthy AI: Governance frameworks for responsible artificial intelligence in enterprise data ecosystems. *International Journal of Science, Engineering and Technology*, 12(1). <https://doi.org/10.5281/zenodo.19208753>
8. Vollem, S. (2024). From deterministic pipelines to intelligent orchestration: A transformer-driven framework for LLM-augmented DevOps automation. *International Journal of Research Publications in Engineering, Technology and Management*, 7(1), 9964–9975. <https://doi.org/10.15662/IJRPETM.2024.0701009>
9. Waseem, M., Liang, P., Shahin, M., Di Salle, A., & Márquez, G. (2021). Design, monitoring, and testing of microservices systems: The practitioners' perspective. *Journal of Systems and Software*, 182, 111061. <https://doi.org/10.1016/j.jss.2021.111061>
10. Ghanta, S. (2023). From open information extraction to probabilistic fusion: Semantic retrieval pipelines for enterprise knowledge graph construction. *International*

- Journal of Research and Applied Innovations, 6(3), 8933–8940. <https://doi.org/10.15662/IJRAI.2025.080201>
11. Nagender, Y. (2023). Architecting intelligence into master data platforms: An evidence mapping approach to AI-enabled dashboards for compliance and quality monitoring. *International Journal of Scientific Research & Engineering Trends*, 9(6). <https://doi.org/10.5281/zenodo.18770933>
 12. Parepalli, S. (2024). Architecting AI-assisted record matching and standardization for enterprise master data governance, explainability, and scalable automation. *International Journal of Scientific Research & Engineering Trends*, 10(2). <https://doi.org/10.5281/zenodo.18640329>
 13. Alshuqayran, N., Ali, N., & Evans, R. (2016). A systematic mapping study in microservice architecture. 2016 IEEE 9th International Conference on Service-Oriented Computing and Applications. <https://doi.org/10.1109/SOCA.2016.15>
 14. Teegala, R. (2024). A governance oriented study of fine-tuning domain specific large language models with transaction and operations data. *KOS Journal of AIML, Data Science, and Robotics*, 1(1), 1–10. <https://doi.org/10.5281/zenodo.18712442>
 15. Pahl, C., & Jamshidi, P. (2016). Microservices: A systematic mapping study. *Proceedings of CLOSER 2016*. <https://doi.org/10.5220/0005785501370146>
 16. Ghanta, S. (2022). Privacy-preserving machine learning for regulated financial systems: A federated learning architecture with layered privacy guarantees. *International Journal of Core Engineering & Management*, 7(4). <https://doi.org/10.5281/zenodo.18920980>
 17. Vankayala, S. C. (2022). Intelligent failure prediction in CI/CD pipelines using machine learning models for enterprise quality assurance. *International Journal of Scientific Research in Science and Technology*, 9(6), 820–832. <https://doi.org/10.32628/IJSRST52310497>
 18. Nanchari, N. (2023). Real-time health monitoring and alerts via IoT. *International Journal of Scientific Research in Computer Science, Engineering and Information Technology (IJSRCSEIT)*, 9(4), 710–713. <https://doi.org/10.32628/CSEIT23564523>
 19. Kephart, J. O., & Chess, D. M. (2003). The vision of autonomic computing. *Computer*, 36(1), 41–50. <https://doi.org/10.1109/MC.2003.1160055>
 20. Menda, J. R. (2022). Grounded generation for enterprise knowledge: Automated documentation and knowledge extraction using GenAI agents. *International Journal of Scientific Research in Computer Science, Engineering and Information Technology*, 8(3), 857–866. <https://doi.org/10.32628/CSEIT2215512>
 21. Seetala SR. Real-Time Data Monitoring Using Cloud Observability Tools: Architectures, Techniques and Emerging Practices. *J Artif Intell Mach Learn & Data Sci* 2023 6(4), 3367-3374. DOI: doi.org/10.51219/JAIMLD/srinivasa-rao-seetala/673
 22. Huebscher, M. C., & McCann, J. A. (2008). A survey of autonomic computing—Degrees, models, and applications. *ACM Computing Surveys*, 40(3). <https://doi.org/10.1145/1380584.1380585>
 23. Nagender, Y. (2022). Strengthening enterprise data integrity through intelligent matching and deduplication in EBX. *European Journal of Advances in Engineering and Technology*, 9(11), 163–177. <https://doi.org/10.5281/zenodo.18629659>
 24. Vollem, S. (2023). Artificial intelligence for root cause analysis in cloud-native systems: Techniques, architectures, and research trends. *European Journal of Advances in Engineering and Technology*, 10(9), 120–129. <https://doi.org/10.5281/zenodo.19347481>
 25. BasiReddy, S. R. (2022). Augmenting customer relationship management workflows with generative AI: Architectures, conversational intelligence, and knowledge-grounded personalization. *International Journal of Scientific Research & Engineering Trends*, 8(5). Zenodo. <https://doi.org/10.5281/zenodo.18324413>
 26. Salehie, M., & Tahvildari, L. (2009). Self-adaptive software: Landscape and research challenges. *ACM Transactions on Autonomous and Adaptive Systems*, 4(2). <https://doi.org/10.1145/1516533.1516538>
 27. Teegala, R. (2022). LLM-powered incident intelligence: Cognitive augmentation for cloud-native operations. *International Journal of Science, Engineering and Technology*, 10(5). <https://doi.org/10.5281/zenodo.18694701>
 28. Tamura, Y., Kawakami, M., & Yamada, S. (2013). Reliability modeling and analysis for open source cloud computing. *Proceedings of the Institution of Mechanical Engineers, Part O: Journal of Risk and Reliability*, 227(2). <https://doi.org/10.1177/1748006X12475110>
 29. Ghanta, S. (2020). Real-time ML responsiveness on Java platforms via targeted ONNX runtime optimization. *International Journal of Science, Engineering and Technology*, 8(4). <https://doi.org/10.5281/zenodo.17760522>

30. Basiri, A., Behnam, N., de Rooij, R., Hochstein, L., Kosewski, L., Reynolds, J., & Rosenthal, C. (2016). Chaos engineering. *IEEE Software*, 33(3), 35–41. <https://doi.org/10.1109/MS.2016.60>
31. Vankayala, S. C. (2021). Architectural approaches to contract testing in event-driven Kafka systems. *European Journal of Advances in Engineering and Technology*, 8(6), 185–191. <https://doi.org/10.5281/zenodo.18467244>
32. Parepalli, S. (2023). Engineering end-to-end data integrity validation for financial reporting pipelines: Continuous controls, reconciliation evidence, and tamper-resistant governance. *International Journal of Scientific Research in Science, Engineering and Technology (IJSRSET)*, 10(9), 416–433. <https://doi.org/10.32628/IJSRSET2310946>
33. Balalaie, A., Heydarnoori, A., & Jamshidi, P. (2016). Microservices architecture enables DevOps: Migration to a cloud-native architecture. *IEEE Software*, 33(3), 42–52. <https://doi.org/10.1109/MS.2016.64>
34. Nanchari, N. (2022). IoT for elderly care and aging in place. *International Journal of Scientific Research in Science, Engineering and Technology (IJSRSET)*, 9(4), 573–575. <https://doi.org/10.32628/IJSRSET221657>
35. Seetala, S. R. (2016). Strategic architecture patterns and design principles for enterprise-grade data integration in large-scale, multi-source and distributed platform environments. *European Journal of Advances in Engineering and Technology*, 3(8), 125–135. <https://doi.org/10.5281/zenodo.19347036>
36. Vollem, S. (2022). Architecting high-throughput transaction processing in distributed microservices systems: Principles, coordination mechanisms, and performance optimization. *International Journal of Scientific Research & Engineering Trends*, 8(3). <https://doi.org/10.5281/zenodo.19219630>
37. Parepalli, S. (2023). Operationalizing responsible AI in financial decision pipelines: Governance, security, compliance, fairness, and explainability. *International Journal of Scientific Research & Engineering Trends*, 9(4). <https://doi.org/10.5281/zenodo.18641518>
38. Menda, J. R. (2021). Building resilient and compliance-driven observability architectures for modern BFSI enterprises using unified monitoring, telemetry correlation, and proactive incident intelligence. *International Journal of Science, Engineering and Technology*, 9(1). <https://doi.org/10.5281/zenodo.18107872>
39. Nagender, Y. (2018). Reimagining master data management as a foundational enterprise capability across business domains. *International Journal of Science, Engineering and Technology*, 6(2). <https://doi.org/10.5281/zenodo.18185350>
40. Teegala, R. (2021). AI-augmented software quality engineering: Data-driven risk, prediction, and continuous assurance in modern software systems. *International Journal of Scientific Research & Engineering Trends*, 7(2). <https://doi.org/10.5281/zenodo.19100296>
41. BasiReddy, S. R. (2022). From static personalization to adaptive intelligence: Building context-aware CRM recommendation systems with AI agents. *International Journal of Science, Engineering and Technology*, 10(3). Zenodo. <https://doi.org/10.5281/zenodo.18183174>