

Smart Classroom Management Software for Enhanced Learning Environment

Assistant Professor Ranjana Thakuria, Prajwal k, Sindhu H, Soumya A Bavagi

Department of Computer Science and Engineering
Sri Venkateswara College of Engineering, Bengaluru

Abstract- Modern education needs real-time engagement and attendance tracking in order to ensure an effective learning environment. This paper introduces a Smart Classroom Management System, developing together with state-of-art tools like OpenCV for facial recognition and the Mailgun API for effective notifications. The automation of attendance would include sending absence notifications along with the topics missed to students and their parents at login. Furthermore, a camera is turned on during the login session to monitor the activity and engagement levels of the user. The system facilitates instant alerting about inactivity to mentors or parents, thus strengthening accountability. By integrating these technologies, the proposed system is the intelligent, responsive solution for classroom automation, allowing the creation of a more connected and interactive educational ecosystem.

Index Terms- Smart Classroom Management Artificial Intelligence in Education Facial Recognition Student Engagement Tracking Automated Attendance System Mailgun API OpenCV Applications Real-time Notifications Education Technology Parent-Teacher Communication

I. INTRODUCTION

The integration of technology in educational places has transformed traditional teaching and learning processes. Smart classrooms are becoming inevitable for establishing engagement, accountability, and efficient administrative tasks. This paper introduces an all-inclusive management system for smart classrooms that automates several functions including attendance and student activity tracking.

Rapid adoption of digital solutions in education is transforming classrooms' ways of working. With the increasing adoption of digital age by schools and learning institutions, there is a growing need for systems that would ensure effective learning while at the same time minimizing administrative burdens. This is what Smart Classroom Management Systems entail: capabilities that extend beyond traditional teaching aids.

This system will ensure key issues for lecturers associated with attendance, engagement tracking, and good communication with parents. The system makes use of advanced technologies like OpenCV and Mailgun API to carry out the automation of such processes with an ability to convey seamless integration with machine intelligence in the on-going classroom activities.

The automated attendance mechanism forms the core of the system. When a student logs into the system, his or her attendance is registered and cross-checked against the earlier login data to mark him or her absent. This mechanism has a feature to report missed topics directly to students and parents, which develops accountability and transparency. It leads to decreased administrative work and helps keep the students on track with the curriculum even in cases of absence.

The proposed system is such a system that confronts the challenges educators face each day in terms of attendance, students' engagement, and communication with parents. This system employs advanced technologies such as OpenCV and Mailgun API, making these processes automatic, hence allowing seamless integration of machine intelligence into the ordinary classroom activities. The heart of the system is the automated attendance mechanism. Upon logging in by the users, the system will both mark and cross-check attendance with previous data regarding login to identify absentees. Notifications of skipped topics are sent directly to students and parents for responsibility and transparency. This decreases the administrative workload and keeps a student updated about the curriculum even while being absent.

The real-time engagement tracking system introduces an additional layer of functionality by using a camera to monitor the user's facial expressions and detect the engagement levels for a given session. Advanced face and eye detection algorithms by OpenCV can identify whether the student is

focused or not active. All such information is processed to provide actionable insights, such as repeated inactivity notified to parents or mentors. The system will focus on real-time analysis so that the interventions can be done soon.

The Mailgun API fuels the communication aspect of the system. Absentee notifications are sent out to students and their guardians with information about the overlooked topics. For mentors, inactivity alerts are automatically generated, giving them live data about a student's engagement and overall performance. Such features assure accountability and yet further involve educators and parents in ensuring that a student is really successful.

The Smart Classroom Management System provides an all-around solution with facial recognition, notification automation, and engagement tracking. The system makes learning the center of focus by automating trivial tasks and building intelligent monitors. Thus, it allows teachers to spend quality time with their students. This will also be a starting point toward the future implementation of individualized learning, as insights may increasingly come from data for teaching strategies tailored to the specific needs of each student.

II. LITERATURE REVIEW

Therefore, smart classrooms have been a primary focus in modern research on education, as they come with sophisticated technology to improve learning environments. Many studies have pointed out that Artificial Intelligence (AI), facial recognition, and real-time communication equipment could eventually solve problems such as attendance record keeping, student engagement, and effective management of a classroom.

Bai et al. (2020) proposed a mobile-based classroom attendance system using facial recognition techniques, demonstrating the efficiency of Eigenfaces and Fisherfaces for accurate attendance management. However, the study did not focus on real-time engagement tracking or dynamic communication with parents and educators.

A mobile automatic classroom attendance system by Refik Samet et al. in 2017 employed facial recognition and also supported mobile apps for the teacher and parents. Although it ensured a smooth attendance process, there was no functionality for real-time monitoring of student activity or engagement.

Yasodharan R et al. (2018) proposed an IoT-based classroom automation system, which had features such as fingerprint-based attendance, projector management, and appliance automation. Even though this system totally focused on automation, it overlooked the absentee notification system as

well as the inclusion of facial recognition for engagement monitoring. Kodali et al. (2016) presented the idea of using lightweight protocols, such as MQTT, in home automation that may be extended to classroom environments as well. Although efficient, the approach was confined to appliance control and lacking the educational context required for smart classroom implementations.

Faritha B. J et al., in 2020, proposed a cloud-integrated smart classroom system using IoT for monitoring classroom conditions. However, potential challenges such as security concerns and difficulties in implementation limited its scalability for broader adoption.

Based on the gaps left open in these studies, the current system is integrated with OpenCV-based facial recognition, Mailgun API for real-time notifications, and with a robust tracking mechanism for engagement. This system contrasts with previous solutions because it does not only provide attendance tracking capabilities but also tracks student inactivity and communicates real-time information to stakeholders.

Advanced facial recognition techniques provide a higher accuracy level, while dynamic systems of notification improve student accountability among parents and educators. By combining multiple technologies into a single framework, the proposed system offers a holistic approach to smart classroom management, addressing critical challenges highlighted in existing literature while introducing novel features to enhance the learning environment.

III. METHODOLOGY

1. User Logon and Attendance Management

This system starts to function once a user logs in. After receiving login credentials, the system verifies the user details by checking them against a MySQL database for authenticity. When the login is successful, the attendance for the same day gets recorded, and login status changes for users. Simultaneously, the system identifies students who haven't logged in as absent and sends corresponding notifications. Such notifications, which carry information about the topics missed, are then sent through the Mailgun API to the respective students and their parents, thus ensuring timely communication and accountability.

2. Activity Tracking

On opening, the software turns on the camera, observing users for activity levels. The system examines video feed using OpenCV's Haar Cascade classifiers for detecting faces and presence of eyes. This step determines if the user is actively engaged or inattentive. If the user is inactive, the system notifies the student to regain their activity level. In cases where the system detects recurring instances of inactivity, it

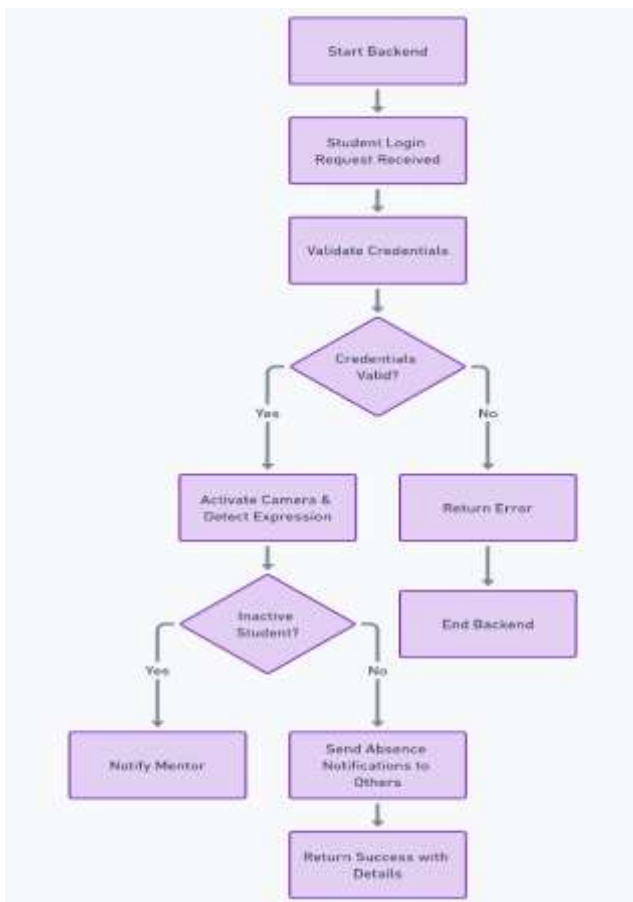
sends notifications to mentors or parents and ensures accountability and intervention.

3. Notification System

The notification system is based on the Mailgun API, which enables real-time communication with students, parents, and mentors. Absentee notifications are sent to both students and their guardians, including information about topics that were not covered due to absence. If someone shows inactivity, then the specific alerts for the mentor will be developed by the system, describing time and date for the session and the nature of inactivity. This active notification system ensures timely communication and enhances the collaboration between educators and parents.

4. Inactivity Detection

Inactivity detection is a crucial component of the system. Each frame from the video feed is analyzed to determine user engagement. The system uses face and eye detection to identify whether the student is attentive. If the system does not detect eyes or the user appears disengaged, it logs the event in the database. After a predefined threshold of inactivity occurrences, an alert is generated and sent to the mentor, detailing the frequency and duration of inactivity.



5. Database Integration

The MySQL database serves as the backbone of the system, storing critical data such as user details, attendance records, engagement history, and missed topics. It allows seamless tracking and retrieval of information to personalize notifications and logs. The database is also updated dynamically to ensure real-time accuracy, enabling the system to provide stakeholders with up-to-date information regarding attendance and engagement levels.

IV. EXPECTED RESULTS

The proposed Smart Classroom Management System is expected to deliver significant improvements in classroom operations by automating attendance tracking, engagement monitoring, and communication processes. The system ensures accurate and real-time attendance recording through facial recognition, reducing the manual effort involved in traditional roll-call methods. Absentee notifications sent to students and their parents provide immediate updates on missed topics, promoting accountability and keeping all stakeholders informed.

Activity monitoring through OpenCV is anticipated to enhance student engagement by identifying periods of inactivity and generating timely notifications for intervention. This real-time tracking ensures that students remain attentive during classroom sessions, thereby improving overall participation and focus. The notification system, powered by the Mailgun API, facilitates seamless communication between students, parents, and mentors, fostering a collaborative environment.

Additionally, the integration of a robust database allows for efficient data management, providing detailed logs of attendance and engagement history. This comprehensive approach is expected to streamline administrative tasks, reduce errors, and offer valuable insights into student behavior and performance. By combining these features, the system is poised to create a dynamic, intelligent, and responsive learning environment that supports the goals of modern education.

Challenges and Limitations

While the proposed Smart Classroom Management System offers numerous benefits, there are several challenges and limitations to consider.

Accuracy of Facial Recognition

One of the primary challenges is the accuracy of facial recognition, which can be affected by factors such as poor lighting conditions, variations in facial features, and the quality of the camera used. The system's ability to accurately detect and recognize faces may degrade under certain conditions, leading to false positives or missed attendance,

especially for students with similar features or when faces are obscured.

Privacy and Security Concerns

Facial recognition and real-time monitoring raise significant privacy and security concerns. Storing and processing biometric data require strict adherence to privacy regulations, such as GDPR or other local data protection laws. Ensuring that this data is securely managed and preventing unauthorized access to sensitive information can be complex and requires additional safeguards.

Dependence on Technology and Infrastructure

The performance of the system relies significantly on stable internet connectivity, camera quality, and the classroom's IT infrastructure. The system is likely to be delayed, inaccurate, or completely fail to operate in places with inadequate connectivity or aging equipment. This dependency on technology can also pose challenges to poor schools with limited budgets or access to good quality devices.

Managing Different Levels of Student Engagement

Detection of student engagement and classification with facial expressions can be less than perfect. There is a possibility that not all students may share their engagement in ways that the system can detect, and cultural or individual differences may introduce inaccuracies in judgments concerning facial expressions. The system might find it difficult to distinguish between physical movement and lack of attention, causing potential false alarms.

Scalability

Scaling up to large classes or multiple classes across a school or educational institution can be technically and logistically burdensome. As the number of students and the amount of data grow, this will have to be processed and thus potentially manage with huge-scale computational resources or optimizations in the system.

The Potential Risk Is Over-Reliance On Automation

Having the automation system perform most of the administrative tasks, one of the potential risks is overdependence on the system that could lead to a lack of human oversight in certain situations. Teachers and mentors become so reliant on the automated system of notifying them and monitoring their students that they may miss nuances of emotional or behavioral issues not detected by the system.

Future Scope and Applications

This proposed Smart Classroom Management System is quite a stride toward transforming the traditional classes into intelligent, automated learning environments. Its potential goes far beyond these capabilities and may offer scope for future improvement and broader applications in educational settings and beyond.

Improved Facial Recognition and Multimodal Engagement Monitoring As advancements in facial recognition technology advance, the system can add more robust algorithms and deep learning models that improve accuracy, especially in some adverse conditions like low lighting or partial occlusion. Moreover, with multimodal engagement tracking-which integrates facial recognition with other sensors such as voice recognition or body movement analysis-it could give a more holistic view of student engagement to make the system more reliable and precise.

Integration with LMS

The future versions of the system will be integrated with Learning Management Systems (LMS) like Moodle or Google Classroom. This would enable the synchronization of attendance records, class content, and missed topics directly onto the course platform. Students and parents can be alerted about new assignments or assessments, while teachers receive real-time data regarding students' progress to make education more tailored.

Real-time Performance Analytics

The use of advanced data analytics and artificial intelligence can support real-time student performance tracking. Engagement patterns, participation rates, and even academic performance could allow the system to provide predictive insights about a student's progress so that teachers could identify at-risk students or those in need of more support, potentially changing the teaching strategies to make sure all students are adequately supported.

Integration of Virtual and Augmented Reality (VR/AR)

The future of the smart classroom might potentially integrate Virtual Reality and Augmented Reality to make learning more immersive. This system could monitor how the students participate in activities that utilize VR/AR while gauging the level of engagement, adding an upgrade to how attention or interaction is measured for students. Such technologies offer unique learning opportunities and hands-on learning, thereby making education much more engaging and interactive.

Scalable Solutions for Large Educational Institutions

As the system evolves, scalability will be a key consideration. The current system, which focuses on smaller classrooms, could be expanded to manage larger educational institutions such as universities or even online learning platforms. With cloud computing and distributed systems, it could handle large volumes of data, ensuring real-time performance tracking and engagement monitoring for thousands of students across multiple campuses or virtual classrooms.

Cross-Platform Interoperability

The system would expand to integrate well with different platforms and devices, such as mobile applications, wearable technologies, and smart classroom devices. The students and

parents could receive real-time access to attendance records, class updates, and any real-time alerts via their mobile phones or smartwatches with both notifications and engagement tracking, thereby making the system more versatile and accessible.

Behavioral and Emotional Analysis

As AI and sentiment analysis technology advance, the system could eventually integrate emotional and behavioral analysis for even more in-depth emotion-related insights into the students' states of mind or possible mental health concerns. Through analyzing facial expressions, voice tones, or even writing patterns, the system may pinpoint stress, anxiety, or disengagement cues, giving educators a chance to proactively address these issues proactively.

Global Rollout and Cross-Cultural Adaptation

With consideration for the cultural variations within facial expressions, engagement behaviors, and styles of communication, it is possible to adapt the system for global use. Coupled with language support and region-specific customization, the system can be deployed in varied educational environments all over the world and offer personalized, regionally relevant experiences to students and faculty coming from diverse regions.

Smart Campus Infrastructures Integration

The long-run prospect for this system is it can be integrated to the smart campus infrastructure as a whole, where it will connect with other systems such as smart lighting, temperature control, and security.

The university could optimize the classroom environment using attendance and engagement data with campus analytics, ensuring perfect learning conditions for students while improving the efficiency of the campus altogether.

Lifelong Learning and Corporate Training

The system can also be applied in corporate training environments beyond traditional education. This can track employee participation and engagement during training sessions, webinars, and workshops, contributing to organizations' need to ensure that their workforce is engaged and proficient in necessary skills, providing continuous learning opportunities and personalized training programs.

The future scope of this Smart Classroom Management System is expansive, with potential applications across education, corporate training, and beyond. As technology continues to evolve, these advancements will provide more sophisticated, personalized, and engaging learning experiences, revolutionizing the way students and teachers interact with educational content and each other.

V. CONCLUSION

The proposed Smart Classroom Management System will thus be a great step in further integrating technology into education systems. It utilizes the power of facial recognition via OpenCV to monitor activities in real-time and automate notices via the Mailgun API, thereby providing all-around solutions to classroom management challenges. These include automating attendance tracking, monitoring student engagement, and ensuring seamless communication with both students and their parents, which improve the learning experience and increase accountability.

While promising significant augmentation of classroom operations, it simultaneously depicts importance in maintaining the sake of technological innovation and privacy issues and comfort among users. Real-time monitoring and notification enable instantaneous intervention so that students do not stray from their way and stay on track. The deployment of facial recognition helps ensure proper attendance tracking and translates into useful insight about student participation, which may be used for improving academic performance.

In conclusion, the Smart Classroom Management System not only streamlines administrative tasks but fosters an even more interactive, responsive and data-driven learning environment. The system lays the way to future advancements in the realm of personalized learning by offering the possibility to scale up across educational institutions worldwide. This system will be updating continuously to fit the current needs of modern education as technology evolves. Thus, this will be meant to aid the teachers and students to have their means to succeed in an increasingly digital world.

REFERENCES

1. M. Zhang and X. Li, "Design of smart classroom system based on internet of things technology and smart classroom," *Mobile Information Systems*, vol. 2021, pp. 1–9, 2021. doi:10.1155/2021/5438878
2. F. Maqbool, S. Ansari, and P. Otero, "The role of Artificial Intelligence and smart classrooms during COVID-19 pandemic and its impact on Education," *Journal of Independent Studies and Research Computing*, vol. 19, no. 1, Jun. 2021. doi:10.31645/jisrc.41.19.1.2
3. A.R. Yuliantoputri, W. Muhamad and S. Suhardi, "Smart Classroom Services System Design Based on Services Computing System," 2019 International Conference on ICT for Smart Society (ICISS), Bandung, Indonesia, 2019, pp. 1-6, doi: 10.1109/ICISS48059.2019.8969809.
4. Y. R, B. D, and H. V. Roy, "IOT based classroom automation using Arduino," *International Journal of Trend in Scientific Research and Development*, vol.

- Volume-2, no. Issue-2, pp. 306–313, 2018. doi:10.31142/ijtsrd9404
5. M. Kwet and P. Prinsloo, “The ‘smart’ classroom: A new frontier in the age of the smart university,” *Teaching in Higher Education*, vol. 25, no.4, pp. 510–526, 2020. doi:10.1080/13562517.2020.1734922
6. Z.T. Zhu, M.H. Yu, and P. Riezebos, “A research framework of Smart Education,” in *Smart Learning Environments*, vol. 3, no. 1, 2016. doi:10.1186/s40561-016-0026-2
7. X. Bai, F. Jiang, T. Shi and Y. Wu, “Design of Attendance System Based on Face Recognition and Android Platform,” 2020 International Conference on Computer Network, Electronic and Automation (ICCNEA), Xi’an, China, 2020, pp. 117-121, doi: 10.1109/ICCNEA50255.2020.00033.
8. R. Samet and M. Tanriverdi, “Face Recognition-Based Mobile Automatic Classroom Attendance Management System,” 2017 International Conference on Cyberworlds (CW), Chester, UK, 2017, pp. 253-256, doi: 10.1109/CW.2017.34.
9. R. K. Kodali and S. Soratkal, “MQTT based home automation system using ESP8266,” 2016 IEEE Region 10 Humanitarian Technology Conference (R10-HTC), Agra, India, 2016, pp. 1-5, doi: 10.1109/R10-HTC.2016.7906845.
10. A.Hussien, E. M. J. Evbogbai, H. E. Amhenrior, V. K. Abanihi, L. O. Bello and V. Oisamoje, “Design and Implementation of a Google Assistant Home Automation System,” 2022 5th Information Technology for Education and Development (ITED), Abuja, Nigeria, 2022, pp. 1-5, doi:10.1109/ITED56637.2022.10051454.
11. G. Manikannan, P. Prabakaran and M. Selvaganapathy, “IoT enabled Smart Switch With user-friendly Electrical Interfacing,” 2022 International Conference on Smart Technologies and Systems for Next Generation Computing (ICSTSN), Villupuram, India, 2022, pp. 1-6, doi: 10.1109/ICSTSN53084.2022.9761327.
12. Faritha B. J, R. R, S. M, and G. M. N R, “IOT based Cloud Integrated Smart Classroom for smart and a sustainable campus,” *Procedia Computer Science*, vol. 172, pp. 77–81, 2020. doi:10.1016/j.procs.2020.05.012.
13. M. Yağanoğlu et al., “Design and validation of IOT based Smart Classroom,” *Multimedia Tools and Applications*, Jul. 2023. doi:10.1007/s11042-023-15872-2
14. H. Ma, D. Liu, R. Xiong and F. Wu, “A CNN-Based Image Compression Scheme Compatible with JPEG-2000,” 2019 IEEE International Conference on Image Processing (ICIP), Taipei, Taiwan, 2019, pp. 704-708, doi:10.1109/ICIP.2019.8803835.
15. D. Stursa and P. Dolezel, “Comparison of ReLU and linear saturated activation functions in a neural network for universal approximation,” 2019 22nd International Conference on Process Control (PC19), Strbske Pleso, Slovakia, 2019, pp. 146-151, doi: 10.1109/PC.2019.8815057.