

Machine Learning Approach for Predicting Compressive Strength of Concrete

Rashida Noori, Atharv Patil, Samarth Gote, Om Gadre, Satish Rathod, Malik Mulani, Prof. V.P.Bhusare

Department of Civil Engineering
Jspm's, Imperial College of Engineering & Research, Nagar Road, Wagholi, Pune

Abstract— Concrete is one of the most widely used construction materials, and its compressive strength is a key parameter that determines its structural performance and durability. Traditionally, determining the compressive strength of concrete requires laboratory testing, which is time-consuming, costly, and dependent on curing conditions and sample preparation. In this study, a data-driven approach is applied to predict the compressive strength of concrete using regression analysis in Microsoft Excel. A dataset containing input variables such as cement content, water-cement ratio, fine and coarse aggregate proportions, and curing age is analysed. Various regression techniques—such as linear, multiple linear, and polynomial regression—are implemented to develop predictive models. The correlation between experimental and predicted results is evaluated using statistical indicators like R^2 , standard error, and residual analysis. The study demonstrates that regression models can effectively predict concrete compressive strength with reasonable accuracy, thereby reducing the need for extensive experimental trials. This approach highlights the potential of Excel as a simple yet powerful tool for engineers and researchers to perform predictive modelling and optimise concrete mix design. The compressive strength of concrete is a crucial property that determines its quality and load-bearing capacity. Conventionally, this strength is obtained through laboratory testing after curing, which can be time-consuming and resource-intensive. This project focuses on predicting the compressive strength of concrete using regression analysis in Microsoft Excel. By utilising input parameters such as cement content, water-cement ratio, fine and coarse aggregates, and curing age, a regression model is developed to estimate strength values. Multiple linear regression is applied to establish a relationship between these variables and the compressive strength. The accuracy of the model is evaluated through statistical measures like the coefficient of determination (R^2) and error analysis. The results indicate that regression-based prediction provides a reliable and cost-effective alternative to traditional testing methods. This approach demonstrates the usefulness of Excel as an accessible tool for data analysis and decision-making in civil engineering applications.

Keywords— Machine Learning, Compressive Strength Prediction, Concrete Strength, Concrete Compressive Strength, Predictive Modeling, Artificial Intelligence in Civil Engineering, Construction Materials, Concrete Mix Design.

I. INTRODUCTION

1. General

Concrete is one of the most widely used construction materials in civil engineering due to its strength, durability, and versatility. The compressive strength of concrete is a fundamental property that determines the structural integrity and load-bearing capacity of buildings, bridges, and other infrastructures. Traditionally, compressive strength is determined through laboratory testing after curing periods of 7, 14, or 28 days. While this method is accurate, it is time-consuming and delays construction processes. In modern construction practices, there is a growing demand for faster and more efficient methods of strength prediction.

Machine Learning (ML), a branch of artificial intelligence, has emerged as a powerful tool for predictive analysis. ML algorithms can analyze large datasets, identify patterns, and make accurate predictions. By applying ML techniques, it is

possible to estimate concrete strength instantly based on input parameters. This project focuses on developing a Machine Learning-based system that predicts compressive strength using parameters such as cement, water, aggregates, and curing age.

Concrete is perhaps the tremendously used materials for constructing buildings of every kind, and it can be used in a myriad of different ways across the construction sector. The main components of regular concrete are cement, water, and various sizes of rocks and gravel. Globally, cement manufacturing and usage in building projects are the leading causes of greenhouse gases (GHG). Cement industries are a major CO₂ emitter, Have a significant influence on the environment. As four billion tons of cement production are generated per year, the equal amount of CO₂ released in the surrounding region. To limit this impact with using discarded or recycled material is recommended. Not just reduce the need for concrete but its deterioration of the environment will stop.

Cement may be replaced by many industrial operational residues (e.g. G G B S, Granite Powder, Fly Ash (F-A) . These additional raw resources will enhance the Hardened concrete and flawlessly reduce carbon footprint up to 80%. When it comes to the design and research of concrete buildings, the concrete compressive strength (also known as C C S) is considered to be one of the most essential characteristics.

The fundamental components of concrete may be enhanced by adding supplementary components like chemical or mineral admixtures, either before or after the concrete has been set. Cementitious mixtures affect concrete quality . Every project requires a lab strength study to determine concrete quality . Predicting concrete strength is a major difficulty in concrete manufacturing units. For heterogeneous construction, the strength is an essential criterion since ancient time .

The mineral admixture added to concrete has a key role in the environment due to global requirements and sustainability . Sustainable materials like fly ash are a reliable alternative for cement in retrofitting, repairs, and big construction. It improves concrete's mechanical and rheological qualities . Because the compressive strength (C.S) of concrete requires a lot of time and effort, It's not easy to find a balance between cost and quality when deciding how much of each appropriate concrete material to use. To save time and money in the lab, scientists have invested more than one decade developing artificial methods for choosing the best strength prediction techniques . It's hard to find or forecast concrete's C.S of complicated mix-ups. Concrete's C.S is evaluated in the lab by breaking the cylinders and standard-sized cubes for a certain amount of time after casting the specimens . The use of this technique has been universally adopted. However, performing testing in a laboratory is likely to be time consuming and money consuming.

2. Machine Learning Overview

The most advanced kind of A-I is machine learning, which has the highest creation of predictive algorithms should be the primary emphasis. This is as a result of the objective recognition of a variety of patterns present in massive datasets for a specific activity that must be completed. This man-made region is designated as Intelligence enables computers to carry out those difficult and complex tasks. Complicated jobs that required a fine level of precision from the robots. These algorithmic processes developed an algorithm that, rather than manually identifying patterns, could learn them from the data. These algorithms individually learned logics from available data, so it perform better than human program interference. These algorithms are built on computer training, which allows learning attributes to make the data point for interpret

knowledge and easily create solutions of other accessible datasets. If an algorithm is taught to distinguish benign from malignant lesions on imaging, it may be used with additional image data to malignant based on learned criteria. The A-I subfields are organized

hierarchically as shown in Fig 1. The following is a list of general categories that may be applied to M-L models. Similarly, the M-L branches are categorized in various ways. It is mainly divided into three categories namely Supervised Learning, Unsupervised learning and reinforcement learning. The model presentation in supervised learning-based tasks starts with the annotated data collection (also known as a feature vector) to imply that datasets include instances of observations and based on what they were anticipating. In order for these models to generate a result of inferring a function that translates feature vectors to label vectors. Standard and well-liked methods of supervised machine learning include the decision tree, boosting, S V M, AdaBoost, bagging, artificial neural networks, and manipulation of gene expression.

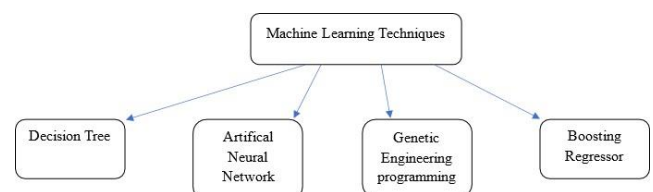


Fig. 1 Artificial intelligence's hierarchical structure and the several subfields

3. Need for the Study

The conventional approach for determining compressive strength involves trial-and-error methods and laboratory testing, which may delay construction activities. With the increasing demand for rapid construction and cost optimization, there is a need for predictive techniques that can estimate concrete strength without extensive physical testing. Machine learning techniques provide a data-driven approach to model complex relationships between input variables and output responses. By analyzing historical data, machine learning models can predict compressive strength with high accuracy. This reduces dependency on laboratory testing and improves decision-making in construction projects.

4. Aim

To develop a machine learning-based system for predicting the compressive strength of concrete.

5. Objectives

- To study the factors affecting concrete compressive strength
- To collect and preprocess concrete mix dataset
- To implement machine learning models for prediction
- To evaluate model performance using statistical metrics
- To develop a web-based application for real-time prediction

6. Scope of the Study

The present study focuses on predicting the compressive strength of concrete using machine learning techniques based on input parameters such as cement, water, aggregates, and age. The study includes data analysis, model development, evaluation, and deployment as a web application. The system is intended to assist engineers in making quick and reliable predictions.

7. Limitations

- The accuracy of prediction depends on the quality and size of the dataset
- Environmental factors such as temperature and humidity are not considered
- The model is limited to the range of data used for training

8. Types of Concrete

Concrete can be classified into different types based on its composition and application:

- Normal Strength Concrete (NSC):
 - Used for general construction purposes with compressive strength up to 40 MPa.
- High-Performance Concrete (HPC):
 - Designed to provide superior strength and durability, often used in bridges and high-rise structures.
- Self-Compacting Concrete (SCC):
 - Flows under its own weight and does not require vibration, improving construction efficiency.
- Lightweight Concrete:
 - Made using lightweight aggregates, reducing the overall structural load.

9. Factors Affecting Compressive Strength

The compressive strength of concrete depends on several factors:

- Water-Cement Ratio
- Cement Content
- Aggregate Quality
- Curing Time (Age)
- Environmental Conditions

Among these, the water-cement ratio plays a crucial role — lower ratio generally increases strength.

10. Need for Machine Learning

Traditional methods fail to model complex relationships.

Machine learning helps:

- Handle nonlinear relationships
- Improve prediction accuracy
- Reduce testing time
- Enable automation

II. LITERATURE REVIEW

Literature Review

An analysis of concrete compressive strength prediction was carried out by reviewing various technical papers, journal articles, and research studies related to machine learning applications in civil engineering.

1. Prediction of concrete compressive strength using Artificial Neural Networks. I-Cheng Yeh (Year 1998)

This study developed an Artificial Neural Network (ANN) model to predict the compressive strength of high-performance concrete. Key findings include:

- The ANN model effectively captured nonlinear relationships between input variables such as cement, water, and aggregates.
- The model achieved higher accuracy compared to traditional regression methods.
- The study demonstrated that machine learning can significantly improve prediction efficiency. Overall, this research laid the foundation for future ML-based prediction models.

2. Comparative study of machine learning methods for concrete strength prediction.

O. Günaydın, S. Göymen (Year 2021)

This study compared multiple machine learning algorithms for predicting concrete strength. Key findings include:

- Random Forest and Gradient Boosting showed superior performance over linear models.
- Ensemble techniques reduced prediction errors significantly.
- Data preprocessing improved model accuracy.
- The study highlights the importance of selecting appropriate ML models.

3. Machine learning prediction with data enhancement techniques.

X. Cui, Q. Wang, R. Zhang (Year 2021)

This research focused on improving prediction accuracy using data enhancement methods. Key findings include:

- Data augmentation improved model performance.
- Feature engineering played a critical role in prediction accuracy.
- Enhanced datasets resulted in more reliable predictions. This study emphasizes the importance of high-quality data.

4. Prediction of high-performance concrete strength using ML models.

A.K. Al-Shamiri, T.F. Yuan (Year 2020)

This study proposed a machine learning approach for predicting high-performance concrete strength. Key findings include:

- ML models achieved high accuracy without extensive parameter tuning.
- Input variables significantly influenced prediction results.
- The model showed strong generalization capability.

This research supports the use of ML in practical applications.

5. Comparative analysis of ML algorithms at high temperature conditions.

A. Ahmad, K.A. Ostrowski (Year 2021)

This study analyzed the performance of ML models under high-temperature conditions. Key findings include:

- Temperature significantly affects compressive strength.
- Random Forest performed best among tested models.
- ML models maintained accuracy under varying conditions.
- This study highlights environmental effects on concrete strength.

6. Performance comparison of ML models for prediction.

A.K. Sah, Y.M. Hong (Year 2024)

This study compared different ML models for strength prediction. Key findings include:

- Ensemble models outperformed individual models.
- Model accuracy improved with increased data size.
- Proper feature selection enhanced results.

The study confirms the effectiveness of ensemble learning.

7. Estimation of concrete strength using multiple ML techniques.

Y.T. Altuncı (Year 2024)

This research evaluated various ML techniques for predicting compressive strength. Key findings include:

- Gradient Boosting achieved the highest accuracy.
- Model performance varied depending on dataset characteristics.
- Advanced models require careful tuning.
- This study emphasizes model selection importance.

8. Machine learning-based method for strength prediction.

D. Li, Z. Tang (Year 2023)

This study proposed a machine learning-based prediction system. Key findings include:

- ML models effectively captured nonlinear relationships.
- Prediction accuracy improved with better feature selection.
- The system demonstrated practical usability.
- This research supports real-world application of ML.

9. Application of ML techniques in concrete strength prediction.

P. Silva, G.F. Moita (Year 2020)

This study applied various ML techniques to predict concrete strength. Key findings include:

- ML models performed better than traditional methods.
- Data quality significantly affected results.
- Prediction models showed consistent performance. This study validates ML as a reliable tool.

10. Estimation of compressive strength using hybrid ML models.

R. Biswas, B. Rai (Year 2020)

This study used hybrid machine learning techniques for prediction. Key findings include:

- Hybrid models improved accuracy compared to single models.
- Optimization techniques enhanced performance.
- The approach reduced prediction errors significantly.

This study demonstrates the potential of hybrid ML approaches.

11. Prediction of concrete compressive strength using Support Vector Machine.

C. Chou, C. Tsai (Year 2011)

This study applied Support Vector Machine (SVM) for predicting concrete compressive strength. Key findings include:

- SVM effectively handled nonlinear relationships between input parameters.
- The model showed better generalization compared to traditional regression.
- Kernel functions significantly influenced prediction accuracy.

The study demonstrates that SVM is a reliable alternative for prediction tasks.

12. Use of decision tree models for concrete strength prediction.

M. Breiman (Year 2001)

This research introduced decision tree-based models for predictive analysis. Key findings include:

- Decision trees are simple and easy to interpret.
- They can handle both numerical and categorical data.
- However, single trees are prone to overfitting.

This study led to the development of ensemble methods like Random Forest.

13. Prediction of compressive strength using regression analysis.

S. Aitcin (Year 2000)

This study used regression techniques to model concrete strength. Key findings include:

- Linear models are simple but limited in handling complex data.
- Water-cement ratio plays a crucial role in strength prediction.
- Regression models require assumptions that may not always hold. The study highlights limitations of traditional approaches.

14. Application of Gradient Boosting in concrete strength prediction.

J. Friedman (Year 2001)

This research introduced Gradient Boosting for predictive modeling. Key findings include:

- Sequential learning improves model accuracy.
- Errors from previous models are minimized in each step.
- Provides high performance for complex datasets.

This study forms the basis for advanced boosting algorithms.

15. Prediction of concrete strength using deep learning models.

H. Zhang, Y. Li (Year 2019)

This study applied deep learning techniques for prediction. Key findings include:

- Deep neural networks achieved high accuracy.
- Large datasets improved model performance.
- Computational cost was higher compared to traditional ML models. This study shows the potential of deep learning in civil engineering.

16. Influence of curing age on compressive strength prediction.

K. Neville (Year 1995)

This study focused on the effect of curing age. Key findings include:

- Strength increases with curing time.
- Age is a critical input parameter for prediction models.
- Proper curing improves durability and strength.

This research emphasizes the importance of time-dependent factors.

17. Hybrid machine learning models for concrete strength prediction.

S. Samui (Year 2008)

This study proposed hybrid ML models combining multiple techniques. Key findings include:

- Hybrid models improved prediction accuracy.
- Combination of algorithms reduced errors.
- Optimization techniques enhanced performance. The study highlights benefits of hybrid approaches.

18. Application of artificial intelligence in civil engineering materials.

A. Adeli (Year 2001)

This research explored AI applications in civil engineering. Key findings include:

- AI techniques improve prediction and analysis.
- Complex relationships can be modeled effectively.
- AI reduces reliance on experimental testing.
- This study supports adoption of AI in construction.

19. Effect of water-cement ratio on concrete strength.

D. Abrams (Year 1918)

This classical study introduced Abrams' law. Key findings include:

- Strength is inversely proportional to water-cement ratio.
- Lower water content leads to higher strength.
- This principle is fundamental in concrete design.

This study remains a cornerstone in concrete technology.

20. Machine learning-based optimization of concrete mix design.

R. Gupta, P. Kumar (Year 2022)

This study focused on optimizing concrete mix using ML. Key findings include:

- ML models help in reducing material usage.
- Optimization leads to cost-effective design.
- Sustainable construction practices can be achieved. This study highlights the role of ML in modern construction.

21. Detailed Comparative Analysis of Reviewed Studies

Studies reviewed in this chapter clearly indicate the evolution of prediction techniques from traditional statistical models to advanced machine learning approaches. Early models such as linear regression were limited in capturing nonlinear relationships, whereas modern techniques such as Random Forest and Gradient Boosting provide higher accuracy and robustness.

A comparison of different studies reveals that ensemble methods consistently outperform single models due to their ability to combine multiple learning algorithms. Artificial Neural Networks also demonstrate high accuracy but lack interpretability.

Furthermore, recent studies emphasize the importance of data preprocessing and feature engineering in improving model performance. It is also observed that dataset size and quality play a crucial role in determining prediction accuracy.

22. Summary of Literature

From the reviewed literature, it can be concluded that machine learning techniques provide an efficient and reliable approach for predicting concrete compressive strength. Ensemble models such as Random Forest and Gradient Boosting have shown superior performance compared to traditional methods.

The literature also highlights that prediction accuracy depends on proper selection of input parameters and quality of data. Despite advancements, there is still scope for improvement in terms of real-time implementation and inclusion of environmental factors.

III. PROBLEM STATEMENT & METHODOLOGY

1. Problem Statement

The compressive strength of concrete is a fundamental parameter in structural design and construction. Conventional methods for determining this strength involve laboratory testing of concrete specimens, which requires significant time, cost, and resources. These methods also delay decision-making in construction projects.

In modern construction practices, there is a growing need for faster and efficient prediction techniques. The relationship between concrete ingredients such as cement, water, aggregates, and age is highly nonlinear and complex, making it difficult to model using traditional approaches.

Therefore, there is a need to develop a reliable and efficient system that can accurately predict the compressive strength of concrete using advanced computational techniques such as machine learning.

2. Proposed Solution

To overcome the limitations of traditional methods, a machine learning-based approach is proposed for predicting the compressive strength of concrete. The system utilizes historical data and applies machine learning algorithms to learn patterns and relationships between input parameters and output strength.

The developed model is further integrated into a web-based application to enable real-time prediction, making it accessible and practical for engineering applications.

3. Methodology

The methodology adopted in this study consists of the following steps:

Data Collection

The dataset used in this study is obtained from a standard source and includes parameters such as cement, water, aggregates, admixtures, and age of concrete.

Data Preprocessing

The collected data is processed to remove inconsistencies and prepare it for model training. This includes handling missing values, normalization, and feature selection.

Model Development

Various machine learning models such as Linear Regression and Random Forest are implemented to predict compressive strength. These models are trained using the prepared dataset.

Model Evaluation

The performance of the models is evaluated using statistical metrics such as:

- Coefficient of Determination (R^2)
- Mean Absolute Error (MAE)
- Root Mean Square Error (RMSE)

Deployment

The best-performing model is deployed as a web application using a suitable framework, allowing users to input parameters and obtain predictions instantly.

4. Flowchart of Methodology

Data Collection → Data Preprocessing → Model Training → Evaluation → Deployment

5. Dataset Source

The dataset used in this study is obtained from:

- UCI Machine Learning Repository / Kaggle
- It contains 1000+ records with input variables and corresponding compressive strength values.

6. Algorithm Description Linear Regression

A statistical method used to model the relationship between dependent and independent variables.

Equation:

$$Y = b_0 + b_1X_1 + b_2X_2 + \dots + b_nX_n$$

Random Forest Regression

- Ensemble learning method
- Uses multiple decision trees
- Reduces overfitting
- Provides high accuracy

Advantages

- Handles nonlinear data
- Robust and reliable

7. Detailed Algorithm Working Random Forest Working (Paste this)

Random Forest is an ensemble learning technique that constructs multiple decision trees during training and outputs the average prediction of individual trees.

The working process includes:

- Random sampling of dataset (Bootstrap Sampling)
- Construction of multiple decision trees
- Selection of random features at each split
- Aggregation of predictions
- Reduces overfitting
- Handles nonlinear relationships
- Provides feature importance

8. Mathematical Model

Add this:

The prediction of compressive strength can be expressed as:

$$f(x) = \sum_{i=1}^n w_i T_i(x)$$

Where:

- $T_i(x)$ = Decision tree output
- w_i = weight of each tree

9. Linear Regression Mathematical Model

Linear Regression is a supervised machine learning algorithm used to model the relationship between independent variables and a dependent variable.

$$y = \beta_0 + \beta_1x_1 + \beta_2x_2 + \dots + \beta_nx_n$$

Where:

- y = Predicted compressive strength
- β_0 = Intercept
- $\beta_1 \dots \beta_n$ = Coefficients
- $x_1 \dots x_n$ = Input variables

This model minimizes the error between predicted and actual values.

10. Loss Function (Error Calculation)

$$MSE = \frac{1}{n} \sum_{i=1}^n (y_i - \hat{y}_i)^2$$

Mean Squared Error (MSE) is used to evaluate model performance. Lower values indicate better accuracy.

11. Random Forest Working

Random Forest is an ensemble learning technique that combines multiple decision trees to improve prediction accuracy. Each tree is trained on a random subset of the dataset using a method called bootstrap sampling.

During prediction, each tree provides an output, and the final prediction is obtained by averaging all outputs. This reduces overfitting and increases model robustness.

Advantages

- Handles nonlinear relationships
- High accuracy
- Resistant to overfitting

IV. RELEVANCE TO THE PRESENT NATIONAL AND GLOBAL SCENARIO

Relevance of Machine Learning in Modern Construction Industry Growing Demand for Smart Construction

With rapid urbanization and infrastructure development, the construction industry is facing increasing demand for faster, efficient, and cost-effective solutions. Traditional methods of testing and analysis are often time-consuming and resource-intensive. Machine learning provides a modern approach to handle these challenges by enabling quick and accurate predictions.

Need for Data-Driven Decision Making

In today's construction industry, decisions are increasingly based on data rather than intuition. Machine learning techniques help in analyzing large datasets and extracting meaningful insights. Predicting concrete compressive strength using machine learning supports engineers in making better and faster decisions during mix design and quality control.

Reduction in Time and Cost

Conventional compressive strength testing requires curing time and laboratory setup, which delays project timelines. Machine learning models can predict strength instantly based on input parameters, significantly reducing testing time and cost. This contributes to improved project efficiency.

Sustainable Construction Practices

Sustainability is a key focus in modern construction. By optimizing concrete mix design through prediction models, it is possible to reduce excess material usage and minimize waste. This leads to reduced environmental impact and supports sustainable development goals.

Integration with Digital Technologies

Machine learning is an integral part of emerging technologies such as Building Information Modeling (BIM), Internet of Things (IoT), and smart infrastructure systems. The integration of predictive models into digital platforms enhances automation and improves overall construction management.

Global Adoption of Artificial Intelligence

Globally, artificial intelligence and machine learning are being widely adopted in engineering and construction sectors. These technologies are used for predictive maintenance, structural health monitoring, and material optimization. The proposed system aligns with global trends toward digital transformation in construction.

Summary

Machine learning plays a significant role in transforming the construction industry by improving efficiency, accuracy, and sustainability. The use of predictive models for concrete strength estimation represents a step toward smarter and more advanced engineering practices.

V. STRENGTHS AND WEAKNESSES OF THE PROJECT

1. Strengths

High Prediction Accuracy

Machine learning models are capable of accurately predicting the compressive strength of concrete by learning complex relationships between input parameters.

Time Efficiency

The developed system provides instant predictions, eliminating the need for time-consuming laboratory testing.

Cost Reduction

By reducing dependency on physical testing, the system helps in minimizing laboratory and material costs.

User-Friendly Application

The model is deployed as a web application, allowing easy access and usability for engineers and students.

Data-Driven Approach

The system uses real data for training, ensuring reliable and consistent predictions.

Scalability

The model can be improved further by adding more data and advanced algorithms.

2. Weaknesses

Dependency on Dataset Quality

The accuracy of the model depends heavily on the quality and size of the dataset used for training.

Limited Parameters

Environmental factors such as temperature, humidity, and curing conditions are not considered.

Generalization Limitations

The model may not perform accurately for data outside the training range.

Black-Box Nature

Some machine learning models do not provide clear interpretability of how predictions are made.

Initial Development Effort

Model development and tuning require technical knowledge and time.

VI. RESEARCH AND DEVELOPMENT IN THE PARTICULAR AREA

1. Overview

Research and development (R&D) in the field of machine learning for civil engineering applications has gained significant importance in recent years. The use of advanced computational techniques has enabled more accurate and efficient prediction of material properties such as concrete compressive strength.

2. Advances in Machine Learning Techniques

Continuous research is being carried out to improve machine learning algorithms for better prediction accuracy. Advanced models such as Artificial Neural Networks (ANN), Support Vector Machines (SVM), Random Forest, and Gradient Boosting are widely studied. These models are capable of capturing complex nonlinear relationships between input variables and output results.

3. Data Enhancement and Feature Engineering

R&D efforts focus on improving the quality of datasets and identifying the most relevant features affecting concrete strength. Techniques such as feature selection, normalization, and data augmentation are used to enhance model performance. Researchers are also exploring the use of larger and more diverse datasets.

4. Integration with Smart Technologies

Machine learning models are increasingly being integrated with modern technologies such as Internet of Things (IoT) and Building Information Modeling (BIM). This integration enables real-time monitoring and prediction of concrete properties, improving construction efficiency and quality control.

5. Sustainable Construction Research

Recent studies are focusing on optimizing concrete mix design to reduce environmental impact. Machine learning is being used to minimize cement usage while maintaining required strength, thereby reducing carbon emissions and promoting sustainable construction practices.

6. Automation and Deployment

Research is also directed toward automating the prediction process through web and mobile applications. Deployment platforms allow real-time access to predictive models, making them practical for field applications and decision-making.

7. Summary

Research and development in this area aim to improve prediction accuracy, enhance efficiency, and integrate machine learning into real-world construction practices. These advancements contribute to the modernization and digital transformation of the construction industry.

VII. MODEL ANALYSIS AND IMPLEMENTATION

1. Overview

This chapter presents the analysis and implementation of the machine learning model developed for predicting the compressive strength of concrete. The process includes dataset handling, model development, evaluation, and deployment as a web application.

2. Dataset Description

The dataset used for this study consists of various input parameters affecting the compressive strength of concrete. These parameters include:

- Cement (kg/m^3)
- Water (kg/m^3)
- Fine Aggregate (kg/m^3)
- Coarse Aggregate (kg/m^3)
- Superplasticizer (kg/m^3)
- Age (days)

The output parameter is the compressive strength of concrete (MPa).

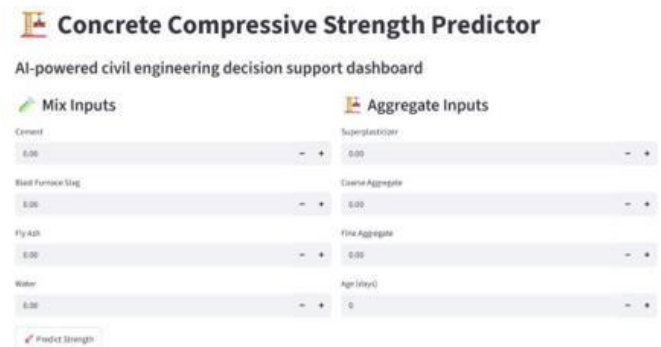


Figure.no.7.1

3. Data Preprocessing

Before training the model, the dataset is preprocessed to ensure accuracy and consistency. The following steps are performed:

- Removal of missing or inconsistent data
- Normalization of input features
- Splitting of dataset into training and testing sets

4. Model Development

Different machine learning models are implemented to predict compressive strength. These include:

- Linear Regression
- Random Forest Regression

The models are trained using the prepared dataset, and their performance is evaluated.

5. Model Evaluation

The performance of the models is evaluated using the following metrics:

- R^2 (Coefficient of Determination): Measures accuracy of prediction
- MAE (Mean Absolute Error): Measures average error
- RMSE (Root Mean Square Error): Measures error magnitude The model with the best performance is selected for deployment.

6. Results of Model

The selected model demonstrates strong predictive performance, with a high correlation between actual and predicted values. The results indicate that machine learning can effectively predict concrete compressive strength.

- Actual vs Predicted graph
- Feature Importance graph

7. Web Application Implementation

The final model is deployed as a web application using a suitable framework. The application allows users to input concrete mix parameters and obtain predicted compressive strength instantly.

Features of the application:

- User-friendly interface
- Real-time prediction
- Easy accessibility

8. Summary

The developed system successfully demonstrates the application of machine learning for predicting concrete compressive strength. The model shows good accuracy and practical usability through web deployment.

VIII. RESULTS AND DISCUSSION

1. Overview

This chapter presents the results obtained from the developed machine learning model and discusses the performance and behavior of the system in predicting the compressive strength of concrete.

2. Model Performance

The trained machine learning model demonstrates good predictive performance when tested on unseen data. The evaluation metrics indicate that the model is capable of accurately estimating compressive strength.

- High value of R^2 indicates strong correlation between predicted and actual values
- Low MAE and RMSE indicate minimal prediction error

3. Graphical Analysis

The graphical representation of results provides better understanding of model performance.

8.3.1 Actual vs Predicted Values

The graph shows a strong linear relationship between actual and predicted values. Most data points lie close to the reference line, indicating high accuracy of the model.

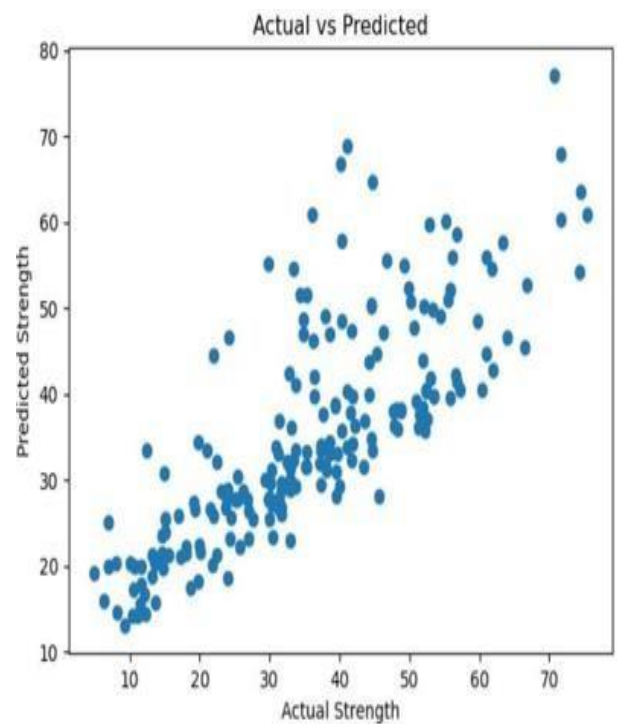


Figure No.8.1. Predicted Strength Vs Actual Strength

Feature Importance Analysis

Feature importance analysis indicates the influence of different input parameters on compressive strength.

- Cement has the highest impact on strength
- Water has a negative effect on strength
- Age significantly affects strength development

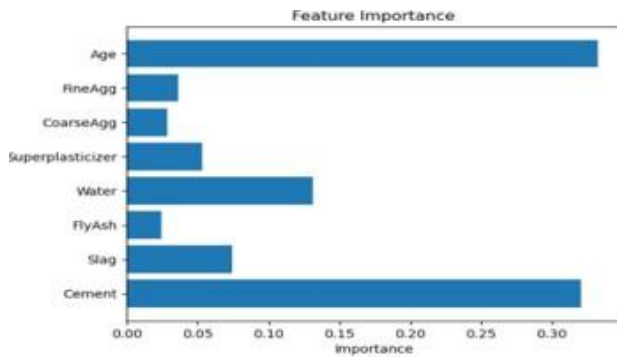


Figure.no.8.2

4. Discussion

The results demonstrate that machine learning models can effectively capture the complex relationships between concrete ingredients and compressive strength. The developed model provides fast and reliable predictions compared to traditional testing methods.

The system reduces time and cost associated with laboratory testing and enables engineers to make quicker decisions. However, the model performance depends on the quality of the dataset and may not account for external environmental conditions.

5. Summary

The results confirm that the proposed machine learning approach is effective for predicting compressive strength of concrete with good accuracy and practical applicability.

IX. CONCLUSION AND FUTURE SCOPE

1. Conclusion

The present study successfully demonstrates the application of machine learning techniques for predicting the compressive strength of concrete. The developed model effectively captures the relationship between input parameters such as cement, water, aggregates, and age, and provides accurate predictions. The results obtained indicate that the model achieves good performance with a strong correlation between actual and predicted values. The deployment of the model as a web application enhances its usability by enabling real-time prediction.

The proposed approach reduces the dependency on traditional laboratory testing, saving time and cost, and provides a practical solution for engineers in the construction industry. Overall, the study highlights the potential of machine learning

in improving efficiency and decision-making in civil engineering applications.

2. Future Scope

- Integration with real-time construction data
- Development of mobile application for field use
- Inclusion of environmental factors such as temperature and humidity
- Optimization of concrete mix design for cost and sustainability
- Use of advanced machine learning and deep learning models for improved accuracy

REFERENCES

1. Possan, E, Thomaz WA, Aleandri GA, Felix EF, dos Santos AC. CO2 uptake potential due to concrete carbonation: A case study. *Case Stud. Constr. Mater.* 2017, 6, 147-161. <https://doi.org/10.1016/j.cscm.2017.01.007>
2. Barkhordari, MS, Tehranizadeh M, Scott MH. Numerical modelling strategy for predicting the response of reinforced concrete walls using Timoshenko theory. *Mag. Concr. Res.* 2021, 73, 988-1010. <https://doi.org/10.1680/jmacr.19.00542>
3. [Venkateswarlu K, Deo S, Murmu M. Effect of Super absorbent polymer on workability, strength and durability of Self consolidating concrete. *Int. J. Eng.* 2021, 34, 1118-1123. <https://doi.org/10.5829/ije.2021.34.05b.05>
4. Yan H, Shen Q, Fan LCH, Wang Y, Zhang L. Greenhouse gas emissions in building construction: a case study of one peking in Hong Kong, *Build. Environ.* 45, 2010, 949- 955. <https://doi.org/10.1016/j.buildenv.2009.09.014>
5. Kumar, R. et al. Estimation of the compressive strength of ultrahigh performance concrete using machine learning models. *Intell. Syst. Appl.* 25, 2667–3053. <https://doi.org/10.1016/j.iswa.2024.200471> (2025).
6. Satyanarayana, A. et al. Assessing the seismic sensitivity of bridge structures by developing fragility curves with ANN and LSTM integration. *Asian J. Civ. Eng.* 25, 5865–5888. <https://doi.org/10.1007/s42107-024-01151-4> (2024).
7. Shaaban, M. Machine Learning—Regression Analysis, GitHub repository, (2024). <https://github.com/M-Shaaban87/Machine-Learning---Regression-Analysis>.
8. Mahmood, W., Mohammed, A. S., Asteris, P. G., Kurda, R. & Armaghani, D. J. Modeling flexural and compressive strengths behaviour of cement-grouted sands modified with water reducer polymer. *Appl. Sci.* 12(3), 1016. <https://doi.org/10.3390/app12031016> (2022).

9. Asteris, P. G. & Mokos, V. G. Concrete compressive strength using artificial neural networks. *Neural Comput. Appl.* 32, 11807–11826. <https://doi.org/10.1007/s00521-019-04663-2> (2020).
10. Gursel AP, Masanet E, Horvath A, Stadel A. Life-cycle inventory analysis of concrete production: a critical review. *Cement and Concrete Composites*, 51, 2014, 38-48. <https://doi.org/10.1016/j.cemconcomp.2014.03.005>
11. Mehta PK. Greening of the concrete industry for sustainable development. *Concrete International*, 24, 2002, 7 23- 28.
12. Mahajan LS, Bhagat SR. Strength Assessment of Concrete using Fly Ash and Metakaolin, In proceeding: International Conference on Advances in Concrete Technology materials and construction practices, Excel India Publishers, New Delhi, 2016, 113-114.
13. Li VC, Wang S, Wu C. Tensile Strain-Hardening Behavior of Polyvinyl Alcohol Engineered Cementitious Composite (PVA-ECC). *Materials Journal*, 2001; 98: 483-492 <https://doi.org/10.14359/10851>
14. Wang S, Li VC. Engineered Cementitious Composites with High-Volume Fly Ash., *ACI Materials Journal*, 104, 2007, 233-241 <https://doi.org/10.14359/18668>
15. Mahajan L, Bhagat S. An artificial neural network for the prediction of the strength of supplementary cementitious concrete. *Res. Eng. Struct. Mater.*, 8(2), 2022, 421-430. <https://doi.org/10.17515/resm2022.341st0918tn>
16. Li M, Hao H, Shi Y, Hao Y. Specimen shape and size effects on the concrete compressive strength under static and dynamic tests, *Constr. Build. Mater.* 161, 2018, 84-93. <https://doi.org/10.1016/j.conbuildmat.2017.11.069>
17. Feng DC, Liu ZT, Wang XD, Chen Y, Chang JQ, Wei DF, Jiang ZM. Machine learningbased compressive strength prediction for concrete: an adaptive boosting approach, *Constr. Build. Mater.* 230, 2020, 117000. <https://doi.org/10.1016/j.conbuildmat.2019.117000>
18. Ahmad A, F. Farooq, KA. Ostrowski, K. 'Sliwa-Wieczorek, S. Czarniecki, Application of novel machine learning techniques for predicting the surface chloride concentration in concrete containing waste material, *Materials (Basel)*. 14, 2021, 2297. <https://doi.org/10.3390/ma14092297>
19. Khan MA, Memon SA, Farooq F., Javed MF, Aslam F., R. Alyousef, Y. Sun, Compressive strength of fly-ash-based geopolymer concrete by gene expression programming and random forest, *Adv. Civ. Eng.* 2021, 1-17. <https://doi.org/10.1155/2021/6618407>
20. Javed MF, Farooq F, Memon SA, Akbar A, Khan MA, F. Aslam, R. Alyousef, H. Alabduljabbar, S.K.U. Rehman, S.K. Ur Rehman, S. Kashif, U. Rehman, New prediction model for the ultimate axial capacity of concrete-filled steel tubes: anevolutionary approach, *Crystals*. 10, 2020, 1-33. <https://doi.org/10.3390/cryst10090741>